



# BOULDER COUNTY COOPERATIVE MOSQUITO CONTROL PROGRAM

MONTHLY REPORT: AUGUST 31, 2008 COLORADO MOSQUITO CONTROL, INC.

## Contact CMC:

Boulder County  
MCD &  
Municipalities  
Marshall Lipps, MPH  
Operations  
Manager  
303-558-8730  
Fax 303-558-8734  
E-Mail:  
mlipps@comosquito  
control.com

## Website:

[www.comosquitocontrol.com](http://www.comosquitocontrol.com)

## Main Office:

General E-Mail:  
info@comosquitocontrol.com  
Toll Free:  
(877) 276-4306

Michael McGinnis,  
President  
695 North 7th Ave.  
Brighton, CO 80601  
303-558-8730  
Fax 303-558-8734  
E-Mail:  
mmcginnis@comosquitocontrol.com

## ***CMC v. OtterTail/JCDHE Trial Update***

On August 11, 2008, Colorado Mosquito Control, Inc. (CMC) began a two week jury trial against OtterTail Environmental, Inc. and Jefferson County Department of Health and Environment (JCDHE) in Boulder County District Court (Case No. 2006CV999). Colorado Mosquito Control asserted various claims against OtterTail and JCDHE, including claims involving CMC's proprietary GIS data depicting mosquito breeding sites identified by CMC in Jefferson County. On Friday, August 22, 2008, the jury returned a verdict in favor of Colorado Mosquito Control and against OtterTail and JCDHE. The jury found in favor of Colorado Mosquito Control and against OtterTail on its claims for misappropriating the GIS data and awarded CMC damages. The jury also found in favor of CMC and against JCDHE on its claim for breach of implied contract and awarded Colorado Mosquito Control what the jury found to be the value of the GIS data. OtterTail asserted counterclaims against CMC and the jury found in favor of Colorado Mosquito Control and against OtterTail on all counterclaims.

## **West Nile Virus-Colorado**

In comparison to 2007, West Nile Virus (WNV) activity continues to be low in Colorado in 2008. As of August 27<sup>th</sup>, CDPHE reports the current number of human cases at 37. Weld County has reported the greatest number of cases at 9, followed by Larimer (6) and Boulder (6). Five (13.5%) neuroinvasive have been diagnosed at this point. Positive mosquito pools have increased through the month of August with 43 positive pools identified from 11 counties. This compares with 567 positive pools as of August 27<sup>th</sup> last year. No equine cases and three avian cases have been noted thus far in 2008.

While 2008 is shaping up to be a relatively mild year, the presence of human and animal cases proves WNV has become well established in Colorado and is a public health threat each year. Furthermore, despite the fact that nearly 85% of transmission occurs from July 1<sup>st</sup> through August 15<sup>th</sup> additional transmission is still possible until the end of the season so personal protective measures should continue to be promoted through September.

2008 Boulder  
County Cooperating  
Municipalities &  
Other Entities:

Boulder County  
MCD  
City of Lafayette  
City of Longmont  
City of Louisville  
Town of Superior  
Boulder County  
Recycling Center

**Wear Your  
Repellent!**

- CDC recently came out with new repellent recommendations, visit our website for a link & more information.

- Studies have shown that most human cases of WNV were preventable. Most people infected did not take precautions such as wearing long sleeves and using repellents.

- The most effective repellents contain 10%-35% DEET (N,N-diethyl-meta-toluamide).

- DEET in high concentrations, above 50%, provides no additional protection

Human West Nile Virus Infections: Colorado, 2008  
*Updated August 27, 2008*

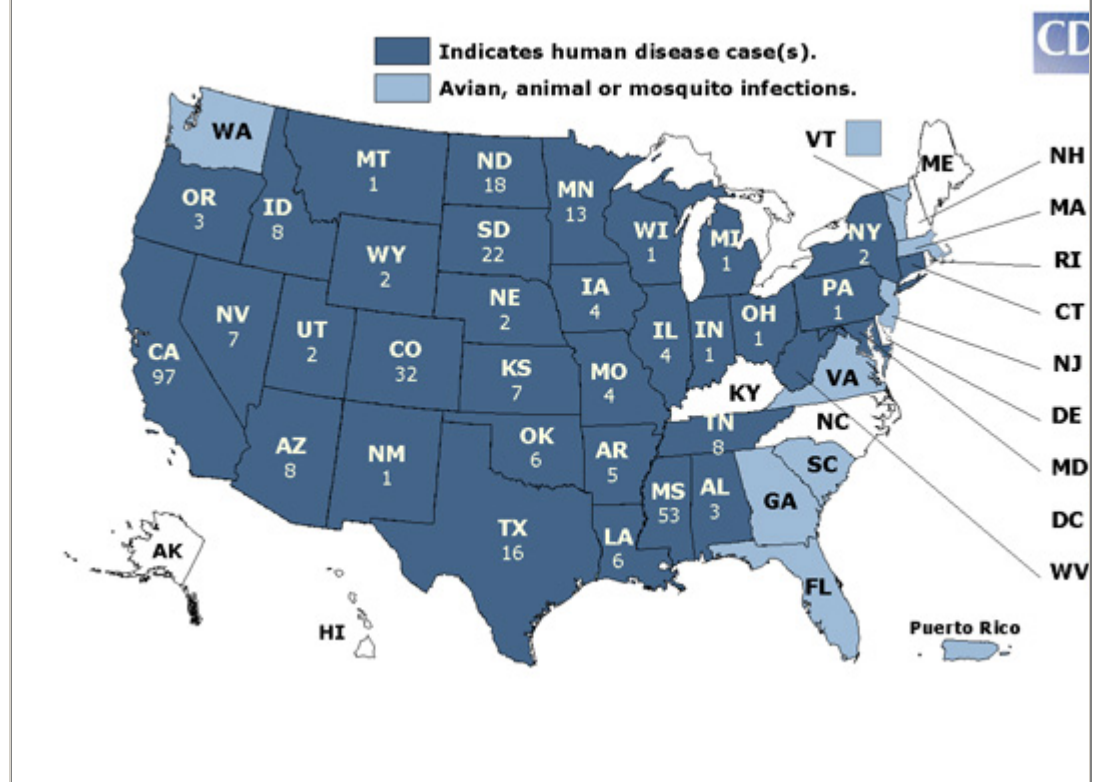
County of Residence	New cases	Clinical diagnosis			Total cases	Total deaths
		Fever	Meningitis	Encephalitis		
Adams	.	1	.	.	1	.
Arapahoe	.	1	1	.	2	.
Boulder	1	6	.	.	6	.
Costilla	.	1	.	.	1	.
Denver	.	2	.	.	2	.
Gunnison	.	1	.	.	1	.
Jefferson	.	2	.	.	2	.
Larimer	.	5	1	.	6	.
Logan	.	1	.	.	1	.
Mesa	.	1	.	.	1	.
Morgan	.	1	.	.	1	.
Otero	.	2	.	.	2	.
Pueblo	.	2	.	.	2	.
Weld	1	6	1	2	9	.
<b>COLORADO</b>	<b>2</b>	<b>32</b>	<b>3</b>	<b>2</b>	<b>37</b>	<b>.</b>

*Counties not listed have no verified human cases of WNV*

**West Nile Virus-U.S.**

West Nile Virus continues to be active throughout the U.S. As of August 26<sup>th</sup> the CDC is reporting 342 cases and 3 deaths nationwide with the greatest number of cases coming from California (97) and Mississippi (53). Please notice that Colorado is reporting 37 cases where CDC is reporting only 32 at this time.

## 2008 West Nile Virus Activity in the United States (Reported to CDC as of August 26, 2008)



## Larval and Adult Control Operations

### *Heavy Rain, Warm Weather Continue to Keep Aedes Mosquito Populations at Levels Well Above Normal*

Record heat and lack of precipitation through July and early August left many sites drying out. However, heavy rains in the middle of the month totaling three inches or more in some areas added large amounts of standing water through the region. These sources of new standing water subsequently lead to regional spikes of floodwater *Aedes* mosquitoes for many areas through the end of August. While the greatest risk of WNV transmission has passed, larval and adult control operations continue to battle the late season spike in nuisance, floodwater mosquitoes.

As we enter September when mosquitoes normally begin a natural decline, CMC will continue both larval and adult mosquito control operations for the next several weeks to combat remaining populations.

Please see the attached data summaries and your Dashboard for more information.

---

## Interactive Data Dashboards Online

Your monthly data summaries are attached as always, but remember that the most up-to-date data on your program is now on-line on your CMC "exclusive" Interactive Data Dashboard!

**Visit your Dashboard now at the following web address:**

<http://www.comosquitocontrol.com/boulderco.html>

Please make sure that you have the latest Adobe Flash Player installed on your computer. You can download the update free at:

<http://www.adobe.com/shockwave/download>

---



## Larvicide Data Summary

by REPORT DATE: 8/1/2008 to 8/31/2008

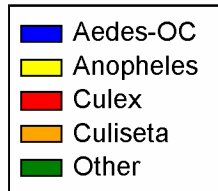
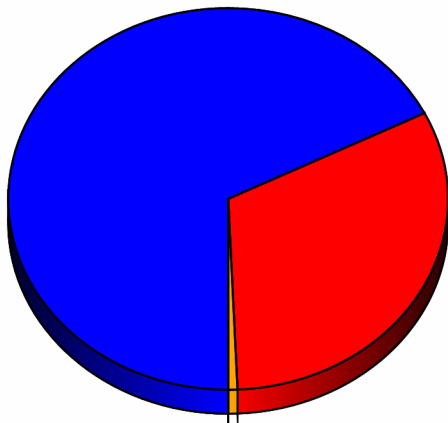
by COUNTY: Boulder

	Total Site Inspections	No. Wet Sites	Percentage Wet Sites	No Sites Treated	Percentage Breeding*	Total Acres Treated
Boulder County-MCD	818	645	79 %	294	46 %	232.6
Boulder County Recycle	5	5	100 %	5	100 %	4.2
Lafayette, City of	139	115	83 %	58	50 %	12.7
Longmont, City of	696	556	80 %	180	32 %	72.2
Louisville, City of	119	99	83 %	48	48 %	10.8
Superior, Town of	63	49	78 %	14	29 %	7.3
Valmont Power Plant	11	9	82 %	3	33 %	0.5

\* (Sites Treated/Wet Sites)



Species	Total
Aedes (Oc.) dorsalis	1,133
Aedes (Oc.) hendersoni	17
Aedes (Oc.) increpitus	23
Aedes (Oc.) melanimon	815
Aedes (Oc.) nigromaculis	7
Aedes (Oc.) trivittatus	2,042
Aedes cinereus	2
Aedes vexans	16,375
<b>AEOC</b>	<b>20,414</b>
Culiseta inornata	204
<b>CS</b>	<b>204</b>
Culex pipiens	370
Culex salinarius	58
Culex tarsalis	9,161
<b>CX</b>	<b>9,589</b>
Coquillettidia perturbans	1
Trap malfunction	0
<b>OTHER</b>	<b>1</b>
<b>TOTAL</b>	<b>30,208</b>



TOTAL	%
20,415	68 %
0	0 %
9,589	32 %
204	1 %
1	0 %



Customer	Subdiv/Area	Material	Start Time	End Time	Miles	
<b>Boulder County-MCD</b>						
<b>Backpack Barrier</b>						
08/26/2008	LEFT HAND CREEK	Talstar One	12:25:00	12:50:00	0.7	
08/26/2008	GUNBARREL GREEN	Talstar One	11:15:00	12:00:00	1.0	
<b>Backpack Barrier</b>					<b>Sum</b>	<b>1.7</b>
					<b>Avg</b>	<b>0.9</b>
					<b>Min</b>	<b>0.7</b>
					<b>Max</b>	<b>1.0</b>
<b>Truck ULV</b>						
08/06/2008	VALHALLA	AquaLuer ULV	12:00:00	12:00:00	0.0	
08/06/2008	SAN LAZARO	AquaLuer ULV	12:00:00	12:00:00	0.0	
08/06/2008	SAGE VALLEY	AquaLuer ULV	12:00:00	12:00:00	0.0	
08/06/2008	RED FOX HILLS	AquaLuer ULV	12:00:00	12:00:00	0.0	
08/06/2008	OXFORD ROAD	AquaLuer ULV	12:00:00	12:00:00	0.0	
08/06/2008	NIWOT	AquaLuer ULV	12:00:00	12:00:00	0.0	
08/06/2008	N 83RD ST	AquaLuer ULV	12:00:00	12:00:00	0.0	
08/06/2008	N 75TH ST	AquaLuer ULV	12:00:00	12:00:00	0.0	
08/06/2008	HYGIENE BURCH LAKE	AquaLuer ULV	12:00:00	12:00:00	0.0	
08/06/2008	BROWNSVILLE	AquaLuer ULV	12:00:00	12:00:00	0.0	
08/06/2008	BASELINE HEIGHTS	AquaLuer ULV	12:00:00	12:00:00	0.0	
08/07/2008	NIWOT	AquaLuer ULV	22:34:00	23:03:00	7.0	
08/07/2008	N 83RD ST	AquaLuer ULV	20:50:00	21:22:00	2.1	
08/07/2008	N 75TH ST	AquaLuer ULV	23:15:00	23:28:00	2.6	
08/07/2008	HYGIENE BURCH LAKE	AquaLuer ULV	22:34:00	23:05:00	5.0	
08/07/2008	BROWNSVILLE	AquaLuer ULV	20:58:00	22:17:00	4.0	
08/07/2008	SAN LAZARO	AquaLuer ULV	12:00:00	12:00:00	0.0	
08/07/2008	SAGE VALLEY	AquaLuer ULV	12:00:00	12:00:00	0.0	
08/07/2008	RED FOX HILLS	AquaLuer ULV	21:40:00	21:55:00	1.0	
08/07/2008	OXFORD ROAD	AquaLuer ULV	12:00:00	12:00:00	0.0	
08/07/2008	BASELINE HEIGHTS	AquaLuer ULV	00:29:00	00:54:00	10.0	
08/07/2008	VALHALLA	AquaLuer ULV	23:34:00	23:51:00	3.0	
08/08/2008	SAN LAZARO	AquaLuer ULV	20:23:00	20:34:00	1.2	
08/13/2008	WILDVIEW	AquaLuer ULV	22:35:00	23:03:00	5.7	
08/13/2008	SPRINGHILL	AquaLuer ULV	22:11:00	22:26:00	2.5	
08/13/2008	ROZENA DRIVE	AquaLuer ULV	21:29:00	21:44:00	1.6	
08/13/2008	RED FOX HILLS	AquaLuer ULV	22:03:00	22:22:00	3.0	
08/13/2008	N 75TH ST	AquaLuer ULV	20:23:00	20:59:00	4.1	
08/13/2008	GUNBARREL GREEN	AquaLuer ULV	21:04:00	21:54:00	9.1	
08/13/2008	CRANE HOLLOW DRIVE	AquaLuer ULV	21:01:00	21:23:00	2.9	
08/13/2008	ANHAWA	AquaLuer ULV	21:55:00	22:20:00	5.2	
08/20/2008	SCHLAGEL	AquaLuer ULV	21:21:00	21:33:00	1.9	
08/20/2008	BARI DONN KNOLLS	AquaLuer ULV	19:57:00	20:36:00	6.0	



# Adulticide Data

Customer	Subdiv/Area	Material	Start Time	End Time	Miles	
08/27/2008	SPANISH HILLS	AquaLuer ULV	23:26:00	00:02:00	8.3	
08/27/2008	SCHLAGEL	AquaLuer ULV	20:39:00	20:50:00	1.7	
08/27/2008	N 49TH STREET	AquaLuer ULV	20:10:00	20:27:00	4.8	
08/27/2008	BOULDER HILLS	AquaLuer ULV	22:00:00	22:27:00	5.4	
<b>Truck ULV</b>					<b>Sum</b>	<b>98.1</b>
					<b>Avg</b>	<b>2.7</b>
					<b>Min</b>	<b>0.0</b>
					<b>Max</b>	<b>10.0</b>
<b>Boulder County-MCD</b>						
<b>Truck ULV</b>						
08/13/2008	BASELINE HEIGHTS	AquaLuer ULV	20:31:00	21:41:00	13.7	
08/20/2008	WILDVIEW ESTATES	AquaLuer ULV	21:43:00	22:15:00	6.7	
<b>Truck ULV</b>					<b>Sum</b>	<b>20.4</b>
					<b>Avg</b>	<b>10.2</b>
					<b>Min</b>	<b>6.7</b>
					<b>Max</b>	<b>13.7</b>
<b>Lafayette, City of</b>						
<b>Truck ULV</b>						
08/05/2008	BLUE HERON AREA	AquaLuer ULV	19:55:00	20:47:00	12.0	
<b>Truck ULV</b>					<b>Sum</b>	<b>12.0</b>
					<b>Avg</b>	<b>12.0</b>
					<b>Min</b>	<b>12.0</b>
					<b>Max</b>	<b>12.0</b>
<b>Longmont, City of</b>						
<b>Truck ULV</b>						
08/06/2008	THE SHORES	AquaLuer ULV	12:00:00	12:00:00	0.0	
08/06/2008	SANDSTONE RANCH	AquaLuer ULV	12:00:00	12:00:00	0.0	
08/06/2008	JIM HAMM POND	AquaLuer ULV	12:00:00	12:00:00	0.0	
08/07/2008	SANDSTONE RANCH	AquaLuer ULV	20:27:00	20:44:00	3.0	
08/07/2008	JIM HAMM POND	AquaLuer ULV	20:06:00	20:16:00	1.5	
08/13/2008	FOX HILL GC	AquaLuer ULV	23:57:00	00:38:00	12.8	
08/13/2008	ST VRAIN GREENWAY	AquaLuer ULV	23:06:00	23:11:00	0.7	
08/13/2008	SANDSTONE RANCH	AquaLuer ULV	22:50:00	23:15:00	3.2	
08/13/2008	JIM HAMM POND	AquaLuer ULV	22:33:00	22:40:00	0.8	
<b>Truck ULV</b>					<b>Sum</b>	<b>22.0</b>
					<b>Avg</b>	<b>2.4</b>
					<b>Min</b>	<b>0.0</b>
					<b>Max</b>	<b>12.8</b>
<b>Longmont, City of</b>						
<b>Truck ULV</b>						
08/07/2008	THE SHORES	AquaLuer ULV	21:42:00	22:25:00	7.5	
<b>Truck ULV</b>					<b>Sum</b>	<b>7.5</b>



**Colorado Mosquito Control, Inc.**

## Adulticide Data

Customer	Subdiv/Area	Material	Start Time	End Time	Miles
				Avg	7.5
				Min	7.5
				Max	7.5
<b>Grand Total</b>					<b>161.7</b>



**Colorado Mosquito Control, Inc.**

## Mosquito Line Call Summary

County	Customer Name		
<b>Boulder</b>			
	Boulder County-MCD		112
	Lafayette, City of		10
	Longmont, City of		21
	Louisville, City of		1
		<b>Total Calls</b>	144