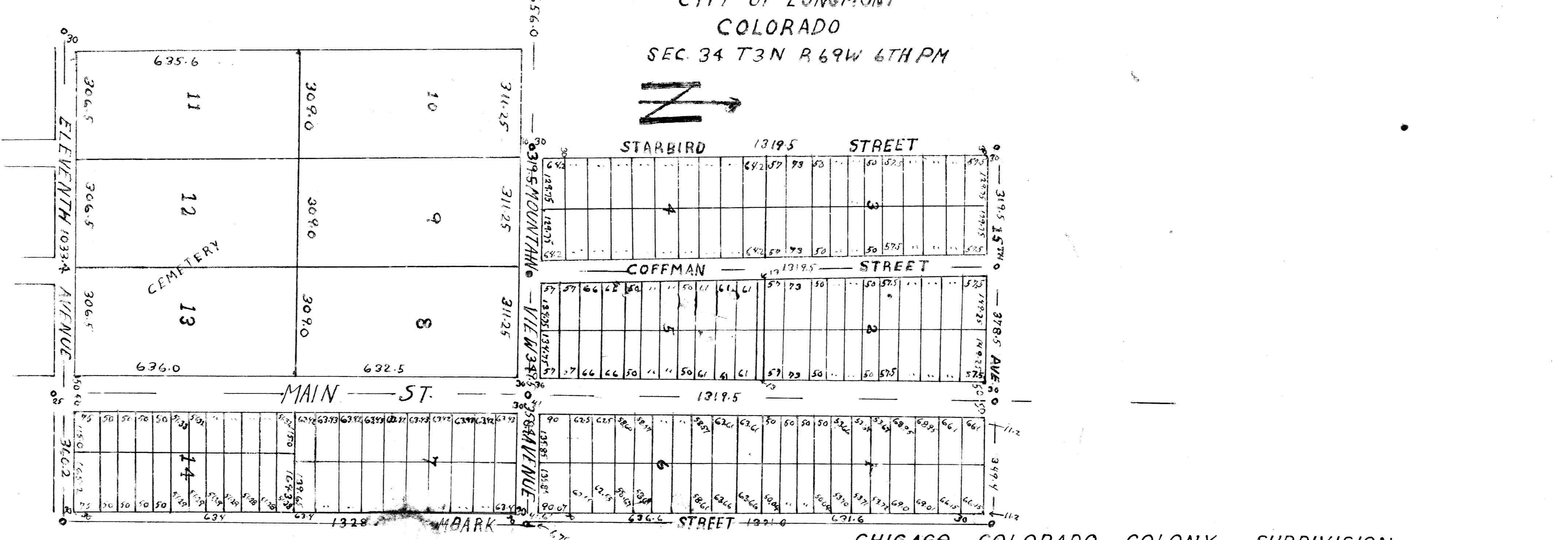
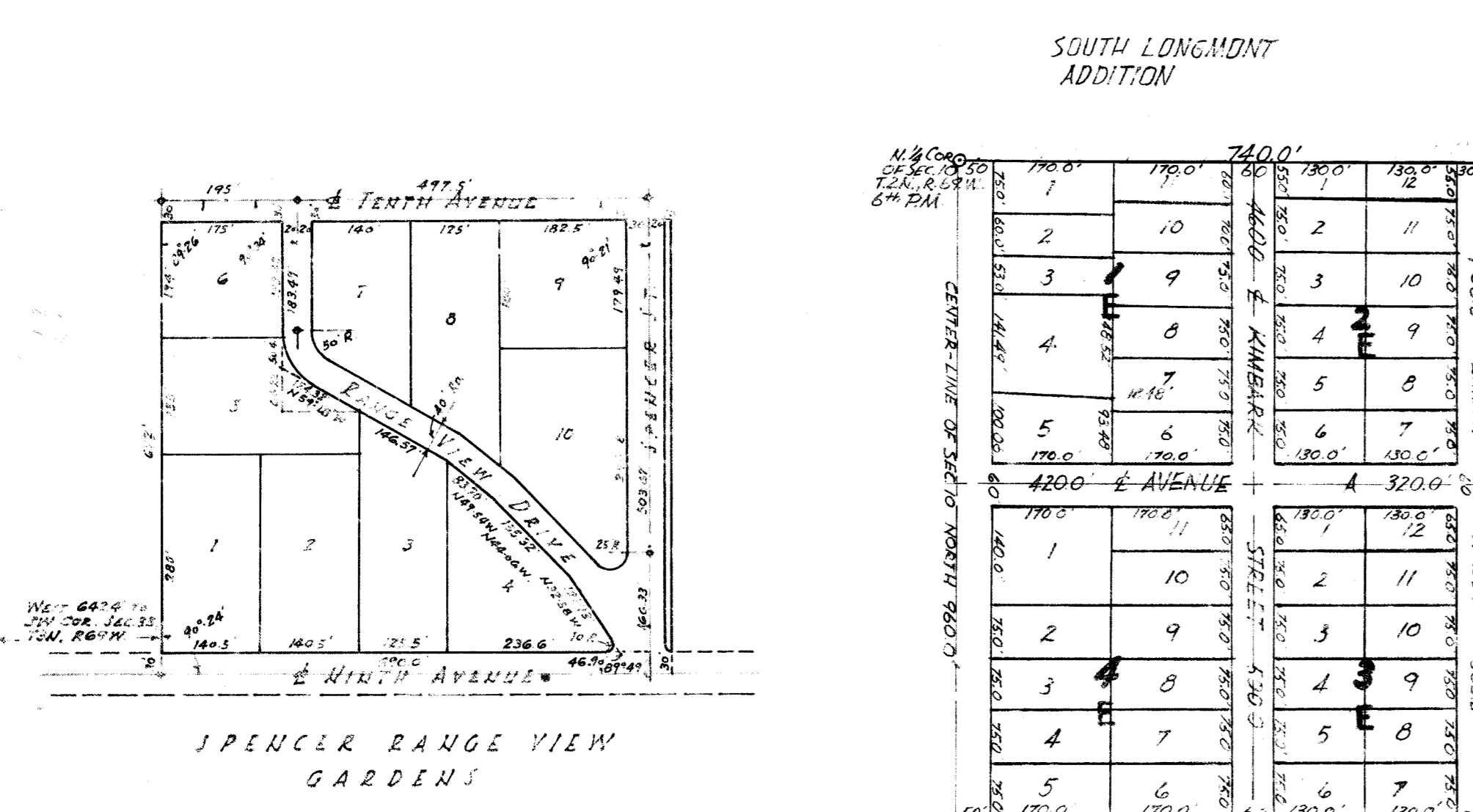
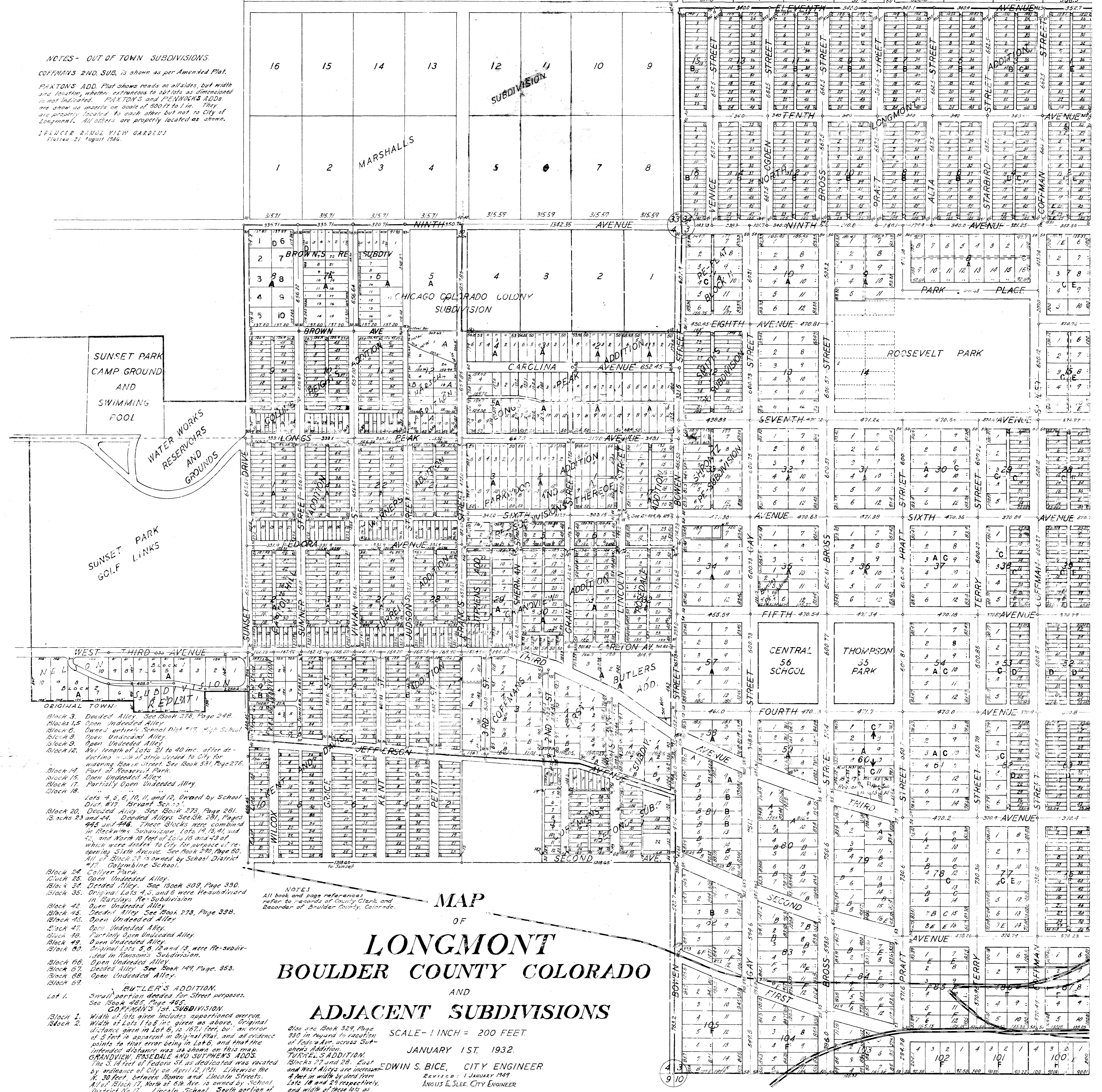


MOUNTAIN VIEW ADDITION
TO THE
CITY OF LONGMONT
COLORADO
SEC 34 T3N R69W 6TH PM



NOTES - OUT OF TOWN SUBDIVISIONS.
COFFMAN'S 2ND. SUB. is shown as per Amended Plat.
PAXTON'S ADD. Plat shows roads on all sides, but width and location, whether extraneous to out lots as dimensioned is not indicated. PAXTON'S and PENNOCK'S ADDS. are shown as insets on scale of 600 ft to 1 in. They are shown as insets to each other but not to City of Longmont. All others are properly located as shown.
SPENCER RANGE VIEW GARDENS
Platted 21 August 1946.



MAP OF
LONGMONT
BOULDER COUNTY COLORADO
AND
ADJACENT SUBDIVISIONS

SCALE - 1 INCH = 200 FEET.
JANUARY 1ST, 1932.

EDWIN S. BICE, CITY ENGINEER
REVISOR: 1 JANUARY 1949
ANGUS E. SLEE, CITY ENGINEER

- ORIGINAL TOWN:
- Block 3. Deeded Alley. See Book 278, Page 248.
 - Block 15. Open Undeeded Alley.
 - Block 6. Own's 4th and 5th School Dist #19, High School.
 - Block 8. Open Undeeded Alley.
 - Block 9. Open Undeeded Alley.
 - Block 12. Net length of Lots 21 to 40 inc. after deducting width of strip deeded to City for widening Bowen Street. See Book 531, Page 276.
 - Block 14. Open Undeeded Alley.
 - Block 15. Open Undeeded Alley.
 - Block 17. Partially Open Undeeded Alley.
 - Block 18. Lots 4, 5, 6, 10, 11, and 12. Owned by School Dist #17, Bryant St. 1/2.
 - Block 20. Deeded Alley. See Book 278, Page 281, 13, 23, 23 and 24. Deeded Alleys See Bk 281, Pages 443 and 446. These blocks were combined in Re-subdivision. Subdivision Lots 17, 18, 21, and 22, and North 10 feet of Lots 16 and 43 of which were deeded to City for purpose of re-opening Sixth Avenue. See Book 270, Page 50, 51, 52, 53, 54, 55, 56, 57, 58, 59, 60, 61, 62, 63, 64, 65, 66, 67, 68, 69, 70, 71, 72, 73, 74, 75, 76, 77, 78, 79, 80, 81, 82, 83, 84, 85, 86, 87, 88, 89, 90, 91, 92, 93, 94, 95, 96, 97, 98, 99, 100.
 - Block 24. Collier Park.
 - Block 25. Open Undeeded Alley.
 - Block 34. Deeded Alley. See Book 309, Page 390.
 - Block 35. Original Lots 4, 5, and 6 were Re-subdivided in Ransoms Re-Subdivision.
 - Block 42. Open Undeeded Alley.
 - Block 43. Deeded Alley. See Book 278, Page 338.
 - Block 45. Open Undeeded Alley.
 - Block 47. Open Undeeded Alley.
 - Block 48. Open Undeeded Alley.
 - Block 49. Open Undeeded Alley.
 - Block 50. Original Lots 5, 6, 10 and 13 were Re-subdivided in Ransoms' Subdivision.
 - Block 56. Open Undeeded Alley.
 - Block 67. Deeded Alley. See Book 149, Page 353.
 - Block 68. Open Undeeded Alley.
 - Block 69.
- BUTLER'S ADDITION:
Lot 1. Small portion deeded for Street purposes. See Book 485, Page 465.
- GOSWELL'S ADDITION:
Block 2. Width of lots given includes appurtenant driveway. Width of Lots 1 to 5 are given as above. Original distance given in Lot 6, is 167.1 feet, by an error of 5 feet is apparent in Original Plat, and all evidence points to that error being in Lot 6, and that the intended distance was as shown on this map.
GRANDVIEW, ROSEDALE AND SUTPHENS' ADDS.
The S. 1/4 of Fedors 31, as dedicated was vacated by ordinance of City on April 12, 1921. Likewise the N. 30 feet, between Bowen and Lincoln Streets. All of Block 17, North of 5th Ave. is owned by School District #19, Lincoln School. South portion of Lots 2 to 5 inc. Block 30, G.V. Ad. deeded to City. See Book 324, Page 125. Net length remaining is given in Book 324, Page 125.
- WESTERBERG SUBDIVISION:
Chicago Colorado Colony Subdivision, Blocks 20 thru 26 and 27 thru 30 and part of 31 replatted as Westernberg Subdivision for annexation to the City. See Book 10, September 1946.
- GIBSON RE-SUBDIVISION:
Blocks 30 and 31 of the Chicago Colorado Colony Subdivision replatted as Gibson Re-subdivision except for portions as shown.
Platted 22 July 1947
- MILCOX'S ADDITION:
Platted 3 Dec 1943
- GIBSON ADDITION:
Platted 10 September 1946
- SOUTH LONGMONT ADDITION:
Platted 22 July 1947

NOTES
All book and page references are to records of County Clerk and Recorder of Boulder County, Colorado.

WELLS SUBDIVISION REPLAT
Platted 3 Dec 1943