

## POPULATION AND CENSUS

82,798\*

Longmont has experienced periods of rapid growth - between 1980 and 2000 the city's population increased from 43,500 to 73,244. According to the 2000 Census there were 71,093 people living in Longmont as of April 1, 2000. Using the data provided by the 2000 Census, the Planning and Development Services Division has estimated the City of Longmont's population for December 31, 2005 to be 82,798. Based on year-end estimates, the population of Longmont has increased by an estimated 1,629 people or 2.01% since 2004.

Estimates placed the population in Longmont at 65,308 at the end of 1999, which translated to an increase of 8,036 people or a 12.3% population increase during 2000. The relatively high percentage increase between 1999 and 2000 is a factor of using 2000 Census information for the 2000 estimate and using factors based on the 1990 Census for the 1999 estimate. A portion of the annual percentage increase can be attributed to the changes that have occurred in variables over the past 10 years. Therefore the one-year increase appears larger than it actually is.

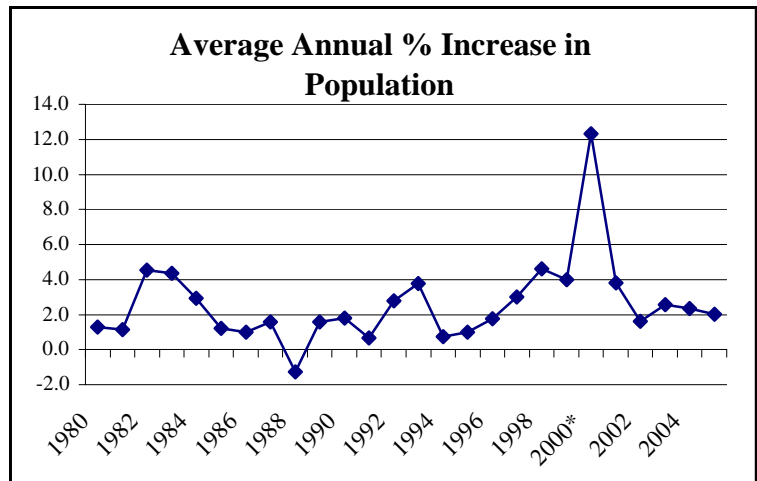
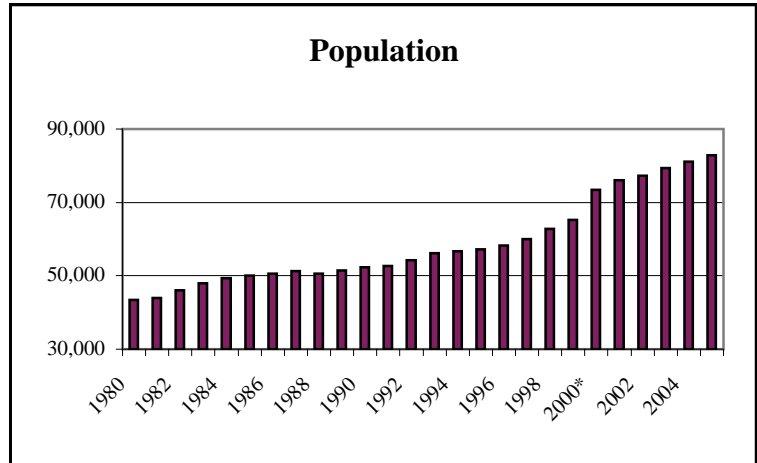
Demographic distribution provides another aspect of population. According to the 2000 Census, married couples comprise 55% of Longmont's households. Those persons aged 35-44 make up the largest age segment (12,797 persons) followed by those persons aged 25-34 (10,756). Persons of Hispanic origin constitute 19% of Longmont's population.

U. S. Census Bureau has released data from the 2005 American Community Survey (ACS) for cities with a population over 65,000. The ACS is a new nationwide survey designed to provide communities a fresh look at how they are changing. The ACS collects and produces population and housing information every year instead of every ten years. About three million households are surveyed each year, from across every county in the nation. Data from the 2005 ACS is now included in our *Community Profile* report.

\*The 82,798 population number is the Planning and Development Services Division's estimate for 12/31/2005.

### LONGMONT POPULATION 1980 -2005 (As of Dec 31 each year)

Year	Population	% Annual Growth
1980	43,500	1.3
1981	44,000	1.1
1982	46,000	4.5
1983	48,000	4.3
1984	49,400	2.9
1985	50,000	1.2
1986	50,500	1.0
1987	51,300	1.6
1988	50,644	-1.3
1989	51,446	1.6
1990	52,372	1.8
1991	52,724	0.7
1992	54,194	2.8
1993	56,237	3.8
1994	56,651	0.7
1995	57,208	1.0
1996	58,173	1.8
1997	60,036	3.0
1998	62,785	4.6
1999	65,308	4.0
2000*	73,344	12.3
2001	76,098	3.8
2002	77,328	1.6
2003	79,321	2.6
2004	81,169	2.3
2005	82,798	2.0

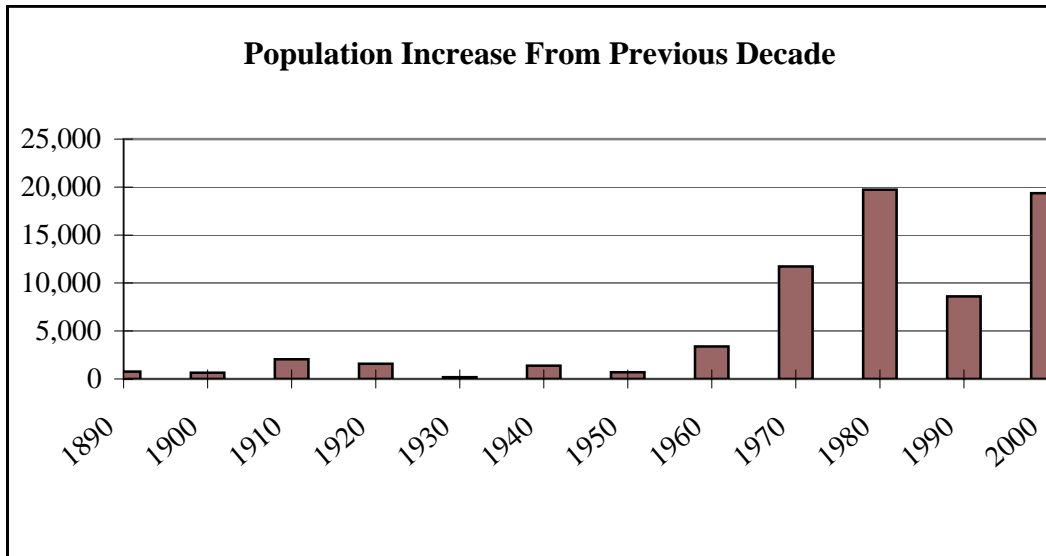


\*The relatively high percentage increase between 1999 and 2000 is a factor of using 2000 Census information for the 2000 estimate and using estimates based on the 1990 Census for the 1999 estimate. A portion of the annual percentage increase can be attributed to the changes that have occurred in variables over the past ten years. Therefore the one-year increase appears larger than it actually is.

Source: City of Longmont Planning Division

## LONGMONT'S HISTORICAL CENSUS POPULATION AND GROWTH ENUMERATION

Year	Population	Population Increase	% Population Increase From Previous Decade
1880	773		
1890	1,543	770	99.6%
1900	2,201	658	42.6%
1910	4,256	2,055	93.4%
1920	5,843	1,587	37.3%
1930	6,029	186	3.2%
1940	7,406	1,377	22.8%
1950	8,099	693	9.4%
1960	11,489	3,390	41.9%
1970	23,209	11,720	102.0%
1980	42,942	19,733	85.0%
1990	51,555	8,613	20.1%
2000	71,093	19,358	37.9%



Sources: U. S. Department of Commerce, Bureau of the Census

**2005 AMERICAN COMMUNITY SURVEY - U. S. Census Bureau  
LONGMONT DATA PROFILE HIGHLIGHTS**

<b>General Characteristics: 2005</b>	<b>Estimate</b>	<b>Percent</b>	<b>U.S.</b>	<b>Margin of Error</b>
Total population	76,181			+/-5,301
Male	36,969	48.5	49.00%	+/-3,223
Female	39,212	51.5	51.00%	+/-2,874
Median age (years)	33.3	(X)	36.4	+/-1.5
Under 5 years	5,638	7.4	7.00%	+/-1,152
18 years and over	55,197	72.5	74.60%	+/-3,622
65 years and over	6,160	8.1	12.10%	+/-1,114
One race	74,443	97.7	98.10%	+/-5,131
White	65,621	86.1	74.70%	+/-5,184
Black or African American	276	0.4	12.10%	+/-252
American Indian and Alaska Native	926	1.2	0.80%	+/-607
Asian	1,819	2.4	4.30%	+/-800
Native Hawaiian and Other Pacific Islander	0	0.0	0.10%	+/-274
Some other race	5,801	7.6	6.00%	+/-2,794
Two or more races	1,738	2.3	1.90%	+/-901
Hispanic or Latino (of any race)	16,582	21.8	14.50%	+/-3,720
Household population	76,181	100.0	100.00%	+/-5,301
Group quarters population	(X)	(X)	(X)	(X)
Average household size	3	(X)	2.60	+/-0.11
Average family size	3	(X)	3.18	+/-0.15
Total housing units	tbr	tbr	tbr	tbr
Occupied housing units	tbr	tbr	tbr	tbr
Owner-occupied housing units	tbr	tbr	tbr	tbr
Renter-occupied housing units	tbr	tbr	tbr	tbr
Vacant housing units	tbr	tbr	tbr	tbr
<b>Social Characteristics</b>				
Population 25 years and over	49,048			+/-3,219
High school graduate or higher	(X)	86.1	84.20%	(X)
Bachelor's degree or higher	(X)	36.5	27.20%	(X)
Civilian veterans (civilian population 18 years and over)	5,177	9.4	10.90%	+/-978
Disability status (population 5 years and over)	6,865	9.7	14.90%	+/-1,223
Foreign born	10,474	13.7	12.40%	+/-2,728
Male, Now married, except separated (population 15 years and over)	17,144	61.3	55.90%	+/-1,677
Female, Now married, except separated (population 15 years and over)	16,719	54.1	51.00%	+/-1,503
Speak a language other than English at home (population 5 years and over)	N	100.0	19.40%	N
<b>Economic Characteristics</b>				
In labor force (population 16 years and over)	N	100.0	65.90%	N
Mean travel time to work in minutes (workers 16 years and over)	23	(X)	25	+/-1.7
Median household income*	51,420	(X)	46,242	+/-4,002
Median family income*	66,994	(X)	55,832	+/-5,966

## 2005 AMERICAN COMMUNITY SURVEY - U. S. Census Bureau LONGMONT DATA PROFILE HIGHLIGHTS

<b>General Characteristics: 2005</b>	<b>Estimate</b>	<b>Percent</b>	<b>U.S.</b>	<b>Margin of Error</b>
Per capita income*	28,590	(X)	25,035	+/-2,057
Families below poverty level	(X)	N	10.2	(X)
Individuals below poverty level	(X)	9.3	13.3	(X)
<b>Housing Characteristics</b>				
Owner-occupied homes	tbr	tbr	tbr	tbr
Median value (dollars)	tbr	tbr	tbr	tbr
Median of selected monthly owner costs	tbr	tbr	tbr	tbr
With a mortgage (dollars)	tbr	tbr	tbr	tbr
Not mortgaged (dollars)	tbr	tbr	tbr	tbr

tbr - Data to be released. Additional data from the 2005 American Community Survey (ACS) are scheduled to be released late August through November.

(X) Not applicable.

\* in 2005 inflation-adjusted dollars

Source: U.S. Census Bureau, 2005 American Community Survey

---

**2005 AMERICAN COMMUNITY SURVEY - U. S. Census Bureau  
LONGMONT DEMOGRAPHIC CHARACTERISTICS**

<b>General Demographic Characteristics: 2005</b>	<b>Estimate</b>	<b>Margin of Error</b>
<b>Total population</b>	<b>76,181</b>	<b>+/-5,301</b>
<b>SEX AND AGE</b>		
Male	36,969	+/-3,223
Female	39,212	+/-2,874
Under 5 years	5,638	+/-1,152
5 to 9 years	4,396	+/-1,219
10 to 14 years	7,305	+/-1,365
15 to 19 years	5,648	+/-1,101
20 to 24 years	4,146	+/-1,200
25 to 34 years	12,911	+/-1,930
35 to 44 years	11,299	+/-1,658
45 to 54 years	13,145	+/-1,706
55 to 59 years	3,615	+/-836
60 to 64 years	1,918	+/-521
65 to 74 years	2,916	+/-891
75 to 84 years	2,667	+/-710
85 years and over	577	+/-276
<b>Median age (years)</b>	<b>33.3</b>	<b>+/-1.5</b>
18 years and over	55,197	+/-3,622
21 years and over	52,234	+/-3,381
62 years and over	7,211	+/-1,191
65 years and over	6,160	+/-1,114
<b>18 years and over</b>	<b>55,197</b>	<b>+/-3,622</b>
Male	25,635	+/-2,175
Female	29,562	+/-2,114
<b>65 years and over</b>	<b>6,160</b>	<b>+/-1,114</b>
Male	2,295	+/-606
Female	3,865	+/-747
<b>RACE</b>		
One race	74,443	+/-5,131
Two or more races	1,738	+/-901
<b>Total population</b>	<b>76,181</b>	<b>+/-5,301</b>
One race	74,443	+/-5,131
White	65,621	+/-5,184
Black or African American	276	+/-252
American Indian and Alaska Native	926	+/-607
Cherokee tribal grouping	N	N
Chippewa tribal grouping	N	N
Navajo tribal grouping	N	N
Sioux tribal grouping	N	N
Asian	1,819	+/-800
Asian Indian	N	N
Chinese	N	N
Filipino	N	N
Japanese	N	N
Korean	N	N
Vietnamese	N	N
Other Asian	N	N
Native Hawaiian and Other Pacific Islander	0	+/-274
Native Hawaiian	N	N

## 2005 AMERICAN COMMUNITY SURVEY - U. S. Census Bureau LONGMONT DEMOGRAPHIC CHARACTERISTICS

General Demographic Characteristics: 2005	Estimate	Margin of Error
Guamanian or Chamorro	N	N
Samoan	N	N
Other Pacific Islander	N	N
Some other race	5,801	+/-2,794
Two or more races	1,738	+/-901
White and Black or African American	51	+/-113
White and American Indian and Alaska Native	787	+/-781
White and Asian	114	+/-130
Black or African American and American Indian and Alaska	0	+/-274
<i>Race alone or in combination with one or more other races</i>		
<b>Total population</b>	<b>76,181</b>	<b>+/-5,301</b>
White	67,359	+/-5,242
Black or African American	327	+/-309
American Indian and Alaska Native	1,823	+/-1,102
Asian	2,043	+/-822
Native Hawaiian and Other Pacific Islander	N	N
Some other race	6,477	+/-2,906
<b>HISPANIC OR LATINO AND RACE</b>		
<b>Total population</b>	<b>76,181</b>	<b>+/-5,301</b>
Hispanic or Latino (of any race)	16,582	+/-3,720
Mexican	N	N
Puerto Rican	N	N
Cuban	N	N
Other Hispanic or Latino	N	N
Not Hispanic or Latino	N	N
White alone	56,539	+/-4,141
Black or African American alone	276	+/-252
American Indian and Alaska Native alone	507	+/-433
Asian alone	1,819	+/-800
Native Hawaiian and Other Pacific Islander alone	0	+/-274
Some other race alone	61	+/-102
Two or more races	397	+/-336
Two races including Some other race	0	+/-274
Two races excluding Some other race, and Three or more races	397	+/-336
<b>RELATIONSHIP</b>		
<b>Household population</b>	<b>76,181</b>	<b>+/-5,301</b>
Householder	30,063	+/-2,003
Spouse	16,250	+/-1,612
Child	23,362	+/-2,966
Other relatives	3,439	+/-1,320
Nonrelatives	3,067	+/-1,050
Unmarried partner	1,749	+/-663
<b>HOUSEHOLDS BY TYPE</b>		
<b>Total households</b>	<b>29,829</b>	<b>+/-2,098</b>
Family households (families)	20,692	+/-1,832
With own children under 18 years	12,040	+/-1,687
Married-couple families	15,828	+/-1,706
With own children under 18 years	8,275	+/-1,501
Male householder, no wife present	1,598	+/-772
With own children under 18 years	1,425	+/-760

## 2005 AMERICAN COMMUNITY SURVEY - U. S. Census Bureau LONGMONT DEMOGRAPHIC CHARACTERISTICS

General Demographic Characteristics: 2005	Estimate	Margin of Error
Female householder, no husband present	3,266	+/-761
With own children under 18 years	2,340	+/-598
Nonfamily households	9,137	+/-1,285
Householder living alone	7,611	+/-1,239
65 years and over	2,744	+/-676
Households with one or more people under 18 years	12,727	+/-1,757
Households with one or more people 65 years and over	4,877	+/-811
Average household size	2.55	+/-0.11
Average family size	3.09	+/-0.15

Data are based on a sample and are subject to sampling variability. The degree of uncertainty for an estimate arising from sampling variability is represented through the use of a margin of error. The value shown here is the 90 percent margin of error. The margin of error can be interpreted roughly as providing a 90 percent probability that the interval defined by the estimate minus the margin of error and the estimate plus the margin of error (the lower and upper confidence bounds) contains the true value. In addition to sampling variability, the ACS estimates are subject to nonsampling error. The effect of nonsampling error is not represented in these tables.

**Notes:**

- The number of householders does not necessarily equal the number of households because of differences in the weighting schemes for the population and occupied housing units.
- For more information on understanding race and Hispanic origin data, please see the Census 2000 Brief entitled, Overview of Race and Hispanic Origin, issued March 2001. (pdf format)

**Explanation of Symbols:**

1. An '\*' entry in the margin of error column indicates that too few sample observations were available to compute a standard error and thus the margin of error. A statistical test is not appropriate.
2. An '\*\*' entry in the margin of error column indicates that no sample observations were available to compute a standard error and thus the margin of error. A statistical test is not appropriate.
3. An '-' entry in the estimate column indicates that no sample observations were available to compute an estimate, or a ratio of medians cannot be calculated because one or both of the median estimates falls in the lowest interval or upper interval of an open-ended distribution.
4. An '-' following a median estimate means the median falls in the lowest interval of an open-ended distribution.
5. An '+' following a median estimate means the median falls in the upper interval of an open-ended distribution.
6. An '\*\*\*' entry in the margin of error column indicates that the median falls in the lowest interval or upper interval of an open-ended distribution. A statistical test is not appropriate.
7. An '\*\*\*\*\*' entry in the margin of error column indicates that the estimate is controlled. A statistical test for sampling variability is not appropriate.
8. An 'N' entry in the estimate and margin of error columns indicates that data for this geographic area cannot be displayed because the number of sample cases is too small.
9. An '(X)' means that the estimate is not applicable or not available.

Source: U.S. Census Bureau, 2005 American Community Survey

**2005 AMERICAN COMMUNITY SURVEY - U. S. Census Bureau  
LONGMONT SOCIAL CHARACTERISTICS**

<b>General Social Characteristics: 2005</b>	<b>Estimate</b>	<b>Margin of Error</b>
<b>SCHOOL ENROLLMENT</b>		
<b>Population 3 years and over enrolled in school</b>	<b>21,163</b>	<b>+/-2,584</b>
Nursery school, preschool	1,122	+/-454
Kindergarten	854	+/-458
Elementary school (grades 1-8)	9,439	+/-1,635
High school (grades 9-12)	5,649	+/-1,341
College or graduate school	4,099	+/-1,058
<b>EDUCATIONAL ATTAINMENT</b>		
<b>Population 25 years and over</b>	<b>49,048</b>	<b>+/-3,219</b>
Less than 9th grade	4,040	+/-1,873
9th to 12th grade, no diploma	2,800	+/-1,036
High school graduate (includes equivalency)	10,624	+/-1,790
Some college, no degree	10,851	+/-1,574
Associate's degree	2,830	+/-849
Bachelor's degree	12,377	+/-1,673
Graduate or professional degree	5,526	+/-945
Percent high school graduate or higher	1	+/-3.7
Percent bachelor's degree or higher	0	+/-3.6
<b>MARITAL STATUS</b>		
<b>Males 15 years and over</b>	<b>27,957</b>	<b>+/-2,405</b>
Never married	8,074	+/-1,760
Now married, except separated	17,144	+/-1,677
Separated	234	+/-254
Widowed	468	+/-249
Divorced	2,037	+/-689
<b>Females 15 years and over</b>	<b>30,885</b>	<b>+/-2,084</b>
Never married	6,720	+/-1,224
Now married, except separated	16,719	+/-1,503
Separated	474	+/-360
Widowed	2,172	+/-623
Divorced	4,800	+/-867
<b>FERTILITY</b>		
<b>Number of women 15 to 50 years old who had a birth in the</b>	<b>924</b>	<b>+/-466</b>
Unmarried women (widowed, divorced, and never married)	268	+/-292
Per 1,000 unmarried women	29	+/-31
Per 1,000 women 15 to 50 years old	43	+/-22
Per 1,000 women 15 to 19 years old	18	+/-29
Per 1,000 women 20 to 34 years old	71	+/-43
Per 1,000 women 35 to 50 years old	26	+/-21
<b>GRANDPARENTS</b>		
<b>Number of grandparents living with own grandchildren under</b>	<b>801</b>	<b>+/-406</b>
Responsible for grandchildren	281	+/-250
Years responsible for grandchildren		
Less than 1 year	N	N
1 or 2 years	N	N
3 or 4 years	N	N
5 or more years	N	N
Characteristics of grandparents responsible for own grandchildren under 18 years		
Who are female	1	+/-20.6
Who are married	N	N

## 2005 AMERICAN COMMUNITY SURVEY - U. S. Census Bureau LONGMONT SOCIAL CHARACTERISTICS

<b>General Social Characteristics: 2005</b>	<b>Estimate</b>	<b>Margin of Error</b>
<b>VETERAN STATUS</b>		
<b>Civilian population 18 years and over</b>	<b>55,197</b>	<b>+/-3,622</b>
Civilian veterans	5,177	+/-978
<b>DISABILITY STATUS OF THE CIVILIAN NONINSTITUTIONALIZED POPULATION</b>		
<b>Population 5 years and over</b>	<b>70,543</b>	<b>+/-4,883</b>
With a disability	6,865	+/-1,223
<b>Population 5 to 15 years</b>	<b>12,895</b>	<b>+/-2,047</b>
With a disability	292	+/-228
<b>Population 16 to 64 years</b>	<b>51,488</b>	<b>+/-3,635</b>
With a disability	4,099	+/-1,031
<b>Population 65 years and over</b>	<b>6,160</b>	<b>+/-1,114</b>
With a disability	2,474	+/-685
<b>RESIDENCE 1 YEAR AGO</b>		
<b>Population 1 year and over</b>	<b>75,410</b>	<b>+/-5,323</b>
Same house	63,746	+/-4,611
Different house in the U.S.	11,084	+/-2,766
Same county	6,541	+/-2,279
Different county	4,543	+/-1,627
Same state	1,924	+/-1,112
Different state	2,619	+/-1,216
Abroad	580	+/-746
<b>PLACE OF BIRTH</b>		
<b>Total population</b>	<b>76,181</b>	<b>+/-5,301</b>
Native	65,707	+/-4,847
Born in United States	65,290	+/-4,857
State of residence	29,870	+/-3,727
Different state	35,420	+/-3,296
Born in Puerto Rico, U.S. Island areas, or born abroad to	417	+/-271
Foreign born	10,474	+/-2,728
<b>U.S. CITIZENSHIP STATUS</b>		
<b>Foreign-born population</b>	<b>10,474</b>	<b>+/-2,728</b>
Naturalized U.S. citizen	2,694	+/-1,252
Not a U.S. citizen	7,780	+/-2,283
<b>YEAR OF ENTRY</b>		
<b>Population born outside the United States</b>	<b>10,891</b>	<b>+/-2,776</b>
Native	417	+/-271
Entered 2000 or later	0	+/-274
Entered before 2000	417	+/-271
Foreign born	10,474	+/-2,728
Entered 2000 or later	3,978	+/-2,375
Entered before 2000	6,496	+/-2,128
<b>WORLD REGION OF BIRTH OF FOREIGN BORN</b>		
<b>Foreign-born population, excluding population born at sea</b>	<b>N</b>	<b>N</b>
Europe	N	N
Asia	N	N
Africa	N	N
Oceania	N	N
Latin America	N	N
Northern America	N	N
<b>LANGUAGE SPOKEN AT HOME</b>		

**2005 AMERICAN COMMUNITY SURVEY - U. S. Census Bureau  
LONGMONT SOCIAL CHARACTERISTICS**

<b>General Social Characteristics: 2005</b>	<b>Estimate</b>	<b>Margin of Error</b>
<b>Population 5 years and over</b>	N	N
English only	N	N
Language other than English	N	N
Speak English less than "very well"	N	N
Spanish	N	N
Speak English less than "very well"	N	N
Other Indo-European languages	N	N
Speak English less than "very well"	N	N
Asian and Pacific Islander languages	N	N
Speak English less than "very well"	N	N
Other languages	N	N
Speak English less than "very well"	N	N
<b>ANCESTRY</b>		
<b>Total population</b>	<b>76,181</b>	<b>+/-5,301</b>
American	1,664	+/-867
Arab	204	+/-271
Czech	1,205	+/-651
Danish	841	+/-588
Dutch	1,673	+/-878
English	8,954	+/-1,606
French (except Basque)	2,476	+/-794
French Canadian	794	+/-539
German	21,229	+/-2,993
Greek	0	+/-274
Hungarian	469	+/-472
Irish	10,497	+/-2,150
Italian	3,538	+/-1,675
Lithuanian	165	+/-157
Norwegian	2,868	+/-840
Polish	2,498	+/-930
Portuguese	327	+/-544
Russian	959	+/-495

## 2005 AMERICAN COMMUNITY SURVEY - U. S. Census Bureau LONGMONT SOCIAL CHARACTERISTICS

General Social Characteristics: 2005	Estimate	Margin of Error
Scotch-Irish	2,869	+/-1,093
Scottish	2,205	+/-750
Slovak	129	+/-216
Subsaharan African	0	+/-274
Swedish	2,820	+/-893
Swiss	858	+/-520
Ukrainian	112	+/-132
Welsh	1,077	+/-629
West Indian (excluding Hispanic origin groups)	0	+/-274

Data are based on a sample and are subject to sampling variability. The degree of uncertainty for an estimate arising from sampling variability is represented through the use of a margin of error. The value shown here is the 90 percent margin of error. The margin of error can be interpreted roughly as providing a 90 percent probability that the interval defined by the estimate minus the margin of error and the estimate plus the margin of error (the lower and upper confidence bounds) contains the true value. In addition to sampling variability, the ACS estimates are subject to nonsampling error. The effect of nonsampling error is not represented in these tables.

**Notes:**

Ancestry listed in this table refers to the total number of people who responded with a particular ancestry; for example, the estimate given for Russian represents the number of people who listed Russian as either their first or second ancestry. This table lists only the largest ancestry groups. Race and Hispanic origin groups are not included in this table because official data for those groups come from the Race and Hispanic origin questions rather than the ancestry question. (See Demographic Table).

Data for year of entry of the native population reflect the year of entry into the U.S. by people who were born in Puerto Rico, U.S. Island Areas or born outside the U.S. to a U.S.citizen parent and who subsequently moved to the U.S.

**Explanation of Symbols:**

1. An '\*' entry in the margin of error column indicates that too few sample observations were available to compute a standard error and thus the margin of error. A statistical test is not appropriate.
2. An '\*\*' entry in the margin of error column indicates that no sample observations were available to compute a standard error and thus the margin of error. A statistical test is not appropriate.
3. An '-' entry in the estimate column indicates that no sample observations were available to compute an estimate, or a ratio of medians cannot be calculated because one or both of the median estimates falls in the lowest interval or upper interval of an open-ended distribution.
4. An '-' following a median estimate means the median falls in the lowest interval of an open-ended distribution.
5. An '+' following a median estimate means the median falls in the upper interval of an open-ended distribution.
6. An '\*\*\*' entry in the margin of error column indicates that the median falls in the lowest interval or upper interval of an open-ended distribution. A statistical test is not appropriate.
7. An '\*\*\*\*\*' entry in the margin of error column indicates that the estimate is controlled. A statistical test for sampling variability is not appropriate.
8. An 'N' entry in the estimate and margin of error columns indicates that data for this geographic area cannot be displayed because the number of sample cases is too small.
9. An '(X)' means that the estimate is not applicable or not available.

Source: U.S. Census Bureau, 2005 American Community Survey

**2005 AMERICAN COMMUNITY SURVEY - U. S. Census Bureau  
LONGMONT ECONOMIC CHARACTERISTICS**

<b>General Economic Characteristics: 2005</b>	<b>Estimate</b>	<b>Margin of Error</b>
<b>EMPLOYMENT STATUS</b>		
<b>Population 16 years and over</b>	<b>N</b>	<b>N</b>
In labor force	N	N
Civilian labor force	N	N
Employed	N	N
Unemployed	N	N
Armed Forces	N	N
Not in labor force	N	N
<b>Civilian labor force</b>	<b>N</b>	<b>N</b>
Unemployed	N	N
<b>Females 16 years and over</b>	<b>N</b>	<b>N</b>
In labor force	N	N
Civilian labor force	N	N
Employed	N	N
<b>Own children under 6 years</b>	<b>6,554</b>	<b>+/-1,274</b>
All parents in family in labor force	4,023	+/-1,020
<b>Own children 6 to 17 years</b>	<b>13,106</b>	<b>+/-1,896</b>
All parents in family in labor force	10,278	+/-1,776
<b>COMMUTING TO WORK</b>		
<b>Workers 16 years and over</b>	<b>37,345</b>	<b>+/-3,049</b>
Car, truck, or van -- drove alone	30,006	+/-2,730
Car, truck, or van -- carpooled	3,765	+/-1,172
Public transportation (excluding taxicab)	876	+/-534
Walked	356	+/-260
Other means	703	+/-446
Worked at home	1,639	+/-637
Mean travel time to work (minutes)	23	+/-1.7
<b>Civilian employed population 16 years and over</b>	<b>38,339</b>	<b>+/-3,122</b>
<b>OCCUPATION</b>		
Management, professional, and related occupations	14,480	+/-1,665
Service occupations	4,603	+/-1,015
Sales and office occupations	9,401	+/-1,317
Farming, fishing, and forestry occupations	307	+/-268
Construction, extraction, maintenance and repair occupations	4,270	+/-1,087
Production, transportation, and material moving occupations	5,278	+/-1,871
<b>INDUSTRY</b>		
Agriculture, forestry, fishing and hunting, and mining	553	+/-362
Construction	3,557	+/-1,113
Manufacturing	5,877	+/-1,288
Wholesale trade	2,152	+/-990
Retail trade	4,048	+/-943
Transportation and warehousing, and utilities	1,041	+/-543
Information	1,048	+/-511
Finance and insurance, and real estate and rental and leasing	1,702	+/-631
Professional, scientific, and management, and administrative and	5,946	+/-1,214
Educational services, and health care, and social assistance	6,196	+/-1,408
Arts, entertainment, and recreation, and accommodation, and food	3,134	+/-1,116
Other services, except public administration	1,750	+/-768
Public administration	1,335	+/-622
<b>CLASS OF WORKER</b>		
Private wage and salary workers	32,925	+/-3,142
Government workers	3,540	+/-799
Self-employed workers in own not incorporated business	1,784	+/-512
Unpaid family workers	90	+/-105

## 2005 AMERICAN COMMUNITY SURVEY - U. S. Census Bureau LONGMONT ECONOMIC CHARACTERISTICS

General Economic Characteristics: 2005	Estimate	Margin of Error
<b>INCOME AND BENEFITS (IN 2005 INFLATION-ADJUSTED DOLLARS)</b>		
<b>Total households</b>	<b>29,829</b>	<b>+/-2,098</b>
Less than \$10,000	1,803	+/-634
\$10,000 to \$14,999	1,249	+/-509
\$15,000 to \$24,999	3,331	+/-965
\$25,000 to \$34,999	2,995	+/-879
\$35,000 to \$49,999	4,936	+/-1,239
\$50,000 to \$74,999	5,548	+/-1,030
\$75,000 to \$99,999	3,592	+/-824
\$100,000 to \$149,999	3,929	+/-912
\$150,000 to \$199,999	1,321	+/-470
\$200,000 or more	1,125	+/-409
Median household income (dollars)	51,420	+/-4,002
Mean household income (dollars)	71,462	+/-5,010
With earnings	25,483	+/-2,020
Mean earnings (dollars)	72,657	+/-5,460
With Social Security	5,880	+/-979
Mean Social Security income (dollars)	11,881	+/-1,182
With retirement income	3,938	+/-687
Mean retirement income (dollars)	21,861	+/-4,824
With Supplemental Security Income	597	+/-383
Mean Supplemental Security Income (dollars)	6,364	+/-2,015
With cash public assistance income	422	+/-310
Mean cash public assistance income (dollars)	1,677	+/-941
With Food Stamp benefits in the past 12 months	1,672	+/-555
<b>Families</b>	<b>20,692</b>	<b>+/-1,832</b>
Less than \$10,000	417	+/-219
\$10,000 to \$14,999	579	+/-358
\$15,000 to \$24,999	1,955	+/-833
\$25,000 to \$34,999	1,129	+/-493
\$35,000 to \$49,999	2,880	+/-1,151
\$50,000 to \$74,999	5,156	+/-969
\$75,000 to \$99,999	2,676	+/-751
\$100,000 to \$149,999	3,655	+/-901
\$150,000 to \$199,999	1,173	+/-441
\$200,000 or more	1,072	+/-402
Median family income (dollars)	66,994	+/-5,966
Mean family income (dollars)	85,893	+/-6,916
Per capita income (dollars)	28,590	+/-2,057
<b>Nonfamily households</b>	<b>9,137</b>	<b>+/-1,285</b>
Median nonfamily income (dollars)	30,736	+/-2,509
Mean nonfamily income (dollars)	36,101	+/-4,153
Median earnings for workers (dollars)	30,049	+/-2,607
Median earnings for male full-time, year-round workers (dollars)	47,407	+/-6,772
Median earnings for female full-time, year-round workers (dollars)	34,920	+/-3,151
<b>PERCENTAGE OF FAMILIES AND PEOPLE WHOSE INCOME IN THE PAST 12 MONTHS IS</b>		
All families	N	N
With related children under 18 years	N	N
With related children under 5 years only	N	N
Married couple families	N	N
With related children under 18 years	N	N
With related children under 5 years only	N	N
Families with female householder, no husband present	N	N
With related children under 18 years	N	N

## 2005 AMERICAN COMMUNITY SURVEY - U. S. Census Bureau LONGMONT ECONOMIC CHARACTERISTICS

General Economic Characteristics: 2005	Estimate	Margin of Error
With related children under 5 years only	N	N
All people	9.30%	+/-2.6
Under 18 years	10.90%	+/-4.4
Related children under 18 years	10.90%	+/-4.4
Related children under 5 years	17.20%	+/-8.7
Related children 5 to 17 years	8.60%	+/-4.7
18 years and over	8.70%	+/-2.2
18 to 64 years	8.50%	+/-2.4
65 years and over	11.00%	+/-6.1
People in families	7.70%	+/-2.8
Unrelated individuals 15 years and over	18.10%	+/-5.2

Data are based on a sample and are subject to sampling variability. The degree of uncertainty for an estimate arising from sampling variability is represented through the use of a margin of error. The value shown here is the 90 percent margin of error. The margin of error can be interpreted roughly as providing a 90 percent probability that the interval defined by the estimate minus the margin of error and the estimate plus the margin of error (the lower and upper confidence bounds) contains the true value. In addition to sampling variability, the ACS estimates are subject to nonsampling error. The effect of nonsampling error is not represented in these tables.

**Notes:**

- The number of householders does not necessarily equal the number of households because of differences in the weighting schemes for the population and occupied housing units.
- Employment and unemployment estimates may vary from the official labor force data released by the Bureau of Labor Statistics because of differences in survey design and data collection.
- Workers include members of the Armed Forces and civilians who were at work last week.
- Occupation codes are 4-digit codes, but are still based on Standard Occupational Classification 2000.
- Industry codes are 4-digit codes and are based on the North American Industry Classification System 2002. However, the Industry categories adhere to the guidelines issued in Clarification Memorandum No. 2, "NAICS Alternate Aggregation Structure for Use By U.S. Statistical Agencies," issued by the Office of Management and Budget.

**Explanation of Symbols:**

1. An '\*' entry in the margin of error column indicates that too few sample observations were available to compute a standard error and thus the margin of error. A statistical test is not appropriate.
2. An '\*\*' entry in the margin of error column indicates that no sample observations were available to compute a standard error and thus the margin of error. A statistical test is not appropriate.
3. An '-' entry in the estimate column indicates that no sample observations were available to compute an estimate, or a ratio of medians cannot be calculated because one or both of the median estimates falls in the lowest interval or upper interval of an open-ended distribution.
4. An '-' following a median estimate means the median falls in the lowest interval of an open-ended distribution.
5. An '+' following a median estimate means the median falls in the upper interval of an open-ended distribution.
6. An '\*\*\*' entry in the margin of error column indicates that the median falls in the lowest interval or upper interval of an open-ended distribution. A statistical test is not appropriate.
7. An '\*\*\*\*\*' entry in the margin of error column indicates that the estimate is controlled. A statistical test for sampling variability is not appropriate.
8. An 'N' entry in the estimate and margin of error columns indicates that data for this geographic area cannot be displayed because the number of sample cases is too small.
9. An '(X)' means that the estimate is not applicable or not available.

Source: U.S. Census Bureau, 2005 American Community Survey