

# **Kiteley Neighborhood Revitalization Plan**

City of Longmont Community and Neighborhood Resources Division

## **Kiteley Neighborhood**



*Aerial View of the Kiteley Neighborhood and the Gibson tractor factory circa 1950  
Photo courtesy of the Longmont Museum and Cultural Center*

**Prepared by:**  
**Tanya Ferencak**  
**Neighborhood Revitalization Specialist**  
**City of Longmont**  
**350 Kimbark St.**  
**Longmont, CO 80501**  
**303-651-8637**  
[Tanya.ferencak@ci.longmont.co.us](mailto:Tanya.ferencak@ci.longmont.co.us)

**October 2010**

## **Kiteley Neighborhood Plan**

### **Kiteley Neighborhood Association Revitalization Planning Committee**

Jeanine Christy  
Kathy Comfort  
Bob and Connie Ferenc  
Bob and Nanette Goings  
Chad Marks  
Dale Peterson  
Evan and Jen Thomas  
Jim Russell  
Lynn Wing  
Ryan Ward  
Pat Zulaf

### **City of Longmont Revitalization Planning Review Committee**

Karen Roney	Director Community Services
Jon Clarke	Supervisor Community and Neighborhood Resources
Kathy Fedler	CDBG Coordinator
Tracy Defrancesco	Housing Program Specialist
Tanya Ferencak	Neighborhood Revitalization Specialist
Julie Pink	Code Enforcement
Nick Wolfrum	Public Works
Don Burchett	Economic Development
Joni Marsh	Economic Development
Michael Reis	Longmont Housing Authority
Craig Earhart	Police
Kathryne Marko	Storm Water Drainage

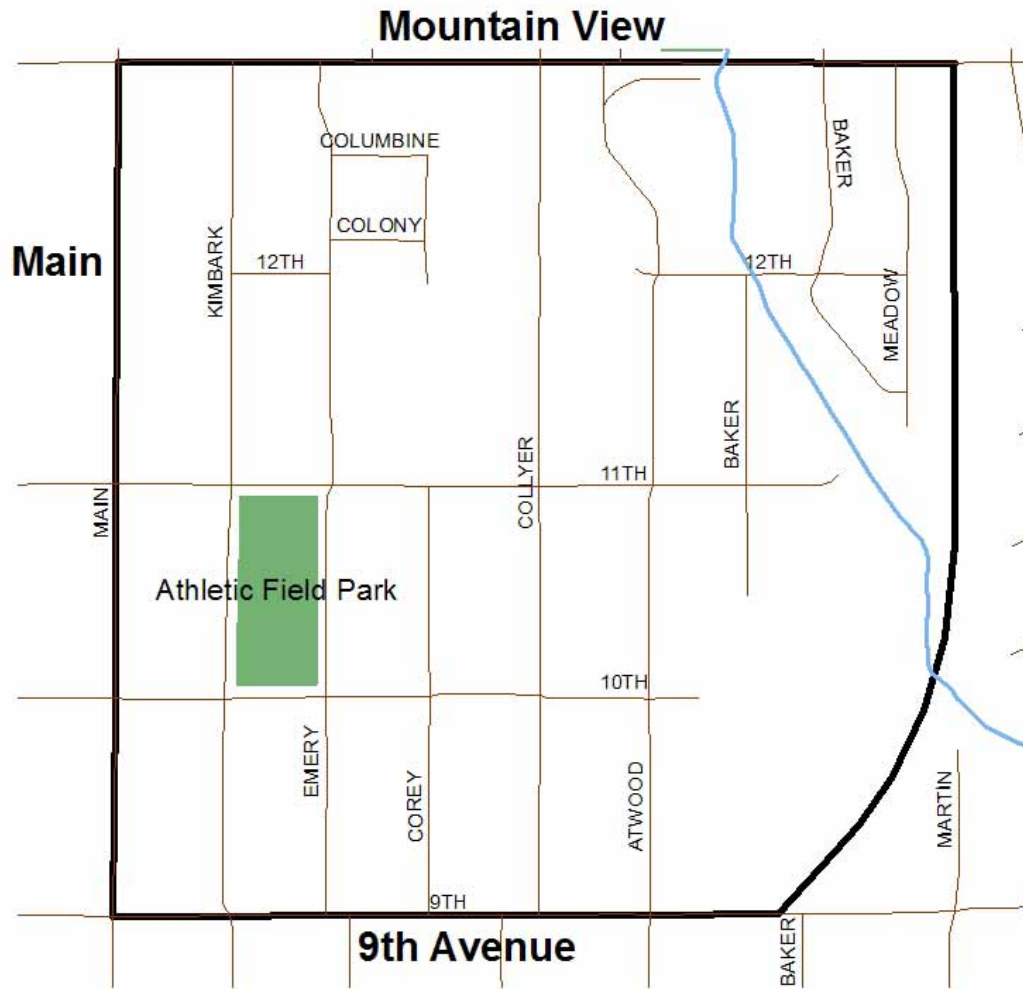
# Kiteley Neighborhood -Longmont Revitalization Plan

## Table of Contents

Map – Midtown Revitalization Area Boundaries	4
Map – Kiteley Neighborhood	5
Executive Summary	6
Introduction	9
Kiteley Neighborhood	9
Neighborhood Planning Issues	10
History & Development	13
The Kiteley’s	13
Gibson Manufacturing Company	13
Civics	14
Kiteley Planning and Neighborhood Revitalization Process	16
Kiteley Neighborhood Input Results	18
Neighborhood Revitalization Plan Interest Areas	22
Traffic and Neighborhood Connectivity	22
Street Lighting and Public Safety	25
Pride in Residences & Energy Efficiency	29
Community Building and Neighborhood Involvement	34
Main St.	36
Outdoor Spaces	38
Budget	41
Glossary	42
How to get Involved	43



# KITELEY NEIGHBORHOOD



## Executive Summary

Neighborhoods are places where people connect with one another. Being part of a community where neighbors know each other and help each other out not only contributes to an individual's health and happiness, but also makes it easier for people to organize around issues of public concern and community benefit. The Longmont City Council wants neighborhoods to continue their strong roles in community problem solving and in ensuring quality public services. However, the Council understands that neighborhoods have a life cycle of their own. As some of our neighborhoods are growing stronger and safer, other neighborhoods may be experiencing issues that threaten their quality of life. The Council reviewed and discussed some of the issues that are taking place in Longmont neighborhoods, and how revitalization efforts could help sustain a high quality of life throughout all Longmont neighborhoods. In 2002, City Council established a Neighborhood Revitalization Program for the Longmont community as comprehensive approach to improving neighborhoods in order to address issues in established neighborhoods.

In 2007 City Council directed staff to examine ways to broaden the City's revitalization efforts that benefited a larger number of neighborhoods and covered a larger geographic area. At the 2008 City Council retreat, Council clarified that staff should also focus on neighborhood stabilization, as well as revitalization. In order to determine the area in which staff would focus the revitalization funds staff first examined the following indicators on a city wide level: Density of Police Quality of Life Calls, Sense of Crime and Disorder index, Density of top nine code violations from January 2005 – January 2008, low to moderate income block groups, and age of housing.

Upon analysis of this information staff recommended that Council focus the 2009 CDBG funding to create the Midtown Revitalization Area, an area roughly bounded by 9<sup>th</sup> Ave. on the south, 17<sup>th</sup> Ave. on the north, and the railroad tracks on the east and Bross St. on the west. This geographic area contains approximately 2900 residential units and 450 commercial properties, and has the highest level of indicators of need. This area is larger and more diverse than other areas where the City has focused revitalization efforts in the past.

The City of Longmont Neighborhood Revitalization Program offers a comprehensive approach to improving neighborhoods. The program identifies and/or links neighborhoods with resources needed to deal with the community, social, physical and economic needs that are particular to a neighborhood to further improve the quality of life for its residents. Neighborhood revitalization could include, but is not limited to, the following elements: community, economic, social and physical improvements.

Neighborhoods that are located within the Midtown Revitalization Area will be asked to come forward and work with the City of Longmont to develop and implement a revitalization strategy for their neighborhood. Staff is implementing a five year revitalization strategy in this area using CDBG funding as the primary source that will

allow staff to focus its efforts for maximum impact. The City will implement the following action steps with interested neighborhoods in the Midtown Revitalization Area as they come forward; Leadership and Capacity Building, Neighborhood Outreach, Plan Development and Implementation, and Short Term Neighborhood Projects.

The Kiteley Neighborhood was the second neighborhood in the Midtown Revitalization Area to come forward and work with City staff to develop a neighborhood plan in the newly created Midtown Revitalization Area. This plan will serve as a shared community vision of the neighborhood revitalization effort and provides a vehicle for residents to work together with City of Longmont staff to improve their community. The goal of the Neighborhood Plan is to involve and include all groups that make up the neighborhood, identify values and issues important to the neighborhood, and include neighborhood improvement strategies to be implemented by all interested residents and community members.

In 2010 the Kiteley Neighborhood Committee, made up of neighborhood residents, formed to assemble a plan that would identify the strengths of the neighborhood with the intent to preserve and enhance them. Based on a statistical analysis of neighborhood surveys and a series of neighborhood meetings and outreach events, six planning interest areas were identified early in the public input process. Those issues, listed in order of importance to Kiteley residents, are the following

- **Traffic and Neighborhood Connectivity**
- **Street Lighting and Public Safety**
- **Pride in Residences & Energy Efficiency**
- **Community Building and Neighborhood Involvement**
- **Main St.**
- **Outdoor Spaces**

For each of the eight interest areas of the Kiteley Plan, projects, programs and action steps have been identified to enhance the appearance, preserve the character and improve the public and private properties of the neighborhood. After the City Council acceptance of the Kiteley Neighborhood Revitalization Plan the neighborhood and the City of Longmont will partner to prepare for Plan implementation. The implementation stage of the planning process is the most anticipated phase since it is the actual development of thoughts and ideas generated during the plan discussions.

The Community and Neighborhood Resources Division will work closely with the Kiteley Neighborhood Group to implement the recommendations identified within the Plan. The Community and Neighborhood Resources Division will also be responsible for assisting in the coordination with the other City Departments and staff members identified as key participants within the Plan. The adopted Neighborhood Plan is not binding or mandatory, but a guiding document for the revitalization of the Kiteley Neighborhood. Unless elements of the Plan have been adopted, directly or indirectly by ordinance, the Plan will serve to coordinate and structure community building efforts between Kiteley Neighborhood Group, the City of Longmont and other local community

agencies. The goal is to have an implementation period of five years, in which Kiteley Neighborhood residents, designated City staff and other local agencies work together to complete as many projects and recommendations as possible.

## **Introduction**

The Kiteley Neighborhood Plan was prepared by the City of Longmont Community and Neighborhood Resources Division in conjunction with the Kiteley Neighborhood Group's Revitalization Committee. In 2010, the Kiteley Neighborhood Group Revitalization Committee held a series of public outreach and neighborhood events in which they identified six elements that would create the body of the Neighborhood Plan. Those elements, listed in order of importance as identified by the Kiteley Neighborhood are:

- **Traffic and Neighborhood Connectivity**
- **Street Lighting and Public Safety**
- **Pride In Residences & Energy Efficiency**
- **Community Building and Neighborhood Involvement**
- **Main St.**
- **Outdoor Spaces**

Funding for this project was made possible through the City of Longmont Community Development Block Grant (CDBG) Program through which annually \$144,000 has been allocated from the City of Longmont's CDBG block grant program to assist in implementing strategies identified in the neighborhood plan.

### **Kiteley Neighborhood**

The Kiteley Neighborhood is located just to the east of Longmont's Historic Main Street. It is bounded by 9<sup>th</sup> Avenue on the south, Main Street on the west, Mountain View Avenue on the north and the railroad tracks on the east.

One of the main characteristics of the Kiteley Neighborhood is its small town feel, which is emphasized by its proximity to Historic Main Street shops and services. Despite its obvious attractiveness, the Kiteley Neighborhood has suffered some deterioration. After the closing of the Kuner-Empson Factory in 1970 and the sugar factory in 1977, there was a marked decline in the Kiteley Neighborhood. The neighborhood's dominant housing type lost its popularity and many dwellings became rental homes and a number of the larger lots were subdivided and newer, more modern homes were built. By the late 1960's and early 1970's the City had re-zoned a portion of the neighborhood commercial in order to promote higher density Business District to serve Main St. Despite the past successes and continued investment in the neighborhood since the 1970's, the Kiteley Neighborhood struggles with issues regarding the upkeep of properties, preservation rehabilitation of historic properties and creating a balance between the businesses along Main St. and the residential neighborhood.

In 2010 the Kiteley Neighborhood Revitalization Committee was formed to assemble a plan that would identify the strengths of the neighborhood with the intent to preserve and enhance them. The housing stock in the area has survived well over the years and requires minimal maintenance and upgrading. In recent years commercial properties on

and around Main Street have shifted from serving the needs of immediately adjacent neighborhoods to serving the larger Longmont area. The high value that Kiteley residents have placed on Historic Main Street has initiated a need for continued growth of mixed use neighborhood oriented projects and maintaining adequate transition zones between busy Main Street and the quiet residential neighborhood. The neighborhood's most significant attribute is its historic character and small town feel, an amenity that attracts many visitors and serves as a reminder of the enduring influence that the vision and planning of Longmont's early planners had on the community.

### **Neighborhood Planning Issues**

Based on a statistical analysis of neighborhood surveys and a series of neighborhood meetings and outreach events, six planning elements were identified early in the public input process. These issues formed the basis of the Neighborhood Plan, the major aspects of which are outlined below:

#### **Traffic and Neighborhood Connectivity**

1. Promote safe and efficient pedestrian and automobile transportation throughout the neighborhood.
2. Look at traffic mitigation options for Collyer St.
3. Add a painted on street bike lane connecting the Community Garden and Longmont High School along 11<sup>th</sup> Ave.
4. Add a crosswalk at 11<sup>th</sup> and Emery (high traffic area with Church and park) to create better and safer access to the park.
5. Add no parking to the corner signs at Kimbark, Corey and Emery St. at 9<sup>th</sup> Ave. to improve visibility.
6. Work with Traffic Engineers to address issues of inconsistent signage throughout neighborhood.
7. Improve crosswalk and pedestrian safety at crossing at 9<sup>th</sup> and Collyer.
8. Add an off street bike trail along Spring Creek Gulch between 11<sup>th</sup> and 9<sup>th</sup> Ave.
9. Encourage the extension of the bike trail system to include an underground connection under the railroad tracks to improve connections to Loma Linda Elementary School, Heritage and other services located to the east of the neighborhood that are currently considered "hard to reach" because of the barrier of the railroad tracks.

#### **Street Lighting and Public Safety**

1. Improve upon inconsistency of on-street lighting in the Kiteley Neighborhood through Longmont Power and Communication's Residential Street Lighting Program.
2. Add lights in the following alleys 1000 Emery, 900 & 1000 Corey and 1100 Baker St. alleys.
3. Add additional lighting to the south, east, and north sides of Athletic Field Park.

4. Reduce speeding in the neighborhood especially around parks, schools and churches.
5. Reduce the negative impact of graffiti.
6. Encourage opportunities for neighbors to be involved in creating a safe Kiteley Neighborhood.

#### **Pride in Residences & Trees**

1. Beautify the neighborhood by strengthening residential code compliance through the creation of proactive and systematic code enforcement by hiring a part time Code Enforcement Officer in 2009 specifically dedicated to CDBG eligible areas.
2. Promote clean and safe streets and alleys through annual neighborhood clean up events.
3. Continue to improve the housing stock in the Kiteley Neighborhood through access to funding and volunteer events.
4. Implement a Crime Free Multi-family Program.
5. Reduce Energy use and carbon footprint of residences in the Kiteley Neighborhood through participation in the Boulder County Neighborhood Energy Sweeps Program.
6. Enhance the existing community forest through the creation of a Kiteley Neighborhood Tree Planting Program.

#### **Community Building and Neighborhood Involvement**

1. Encourage more community wide events and gatherings.
2. Increase level of awareness and involvement within the Kiteley Neighborhood.
3. Create an active on going Neighborhood Organization for the Kiteley Neighborhood that registers and participates in the Neighborhood Group Leader's Association of Longmont.
4. Create a "Local Gardener's Market" for neighbors of the Kiteley area gardeners and gardeners at the Community Gardens, both Second Start and Growing Gardens, can provide fresh produce to neighborhood residents.

#### **Main St. Business and Neighborhood Interaction**

1. Beautify the neighborhood and Business District by strengthening business code compliance through the creation of proactive and systematic code enforcement with a part time Code Enforcement Officer in 2009- 2012 specifically dedicated to CDBG eligible areas.
2. Promote the objective of the Midtown Development Plan for Main St.
3. Coordinate with the City of Longmont Planning Department for the strategic revitalization of the Kiteley Business Corridor.

#### **Outdoor Spaces**

1. Add a small playground and improve amenities to Athletic Field Park.

2. Create a formal public space adjoining the gardens (Second Start and 11<sup>th</sup> and Baker) so neighbors feel more welcome to the area to encourage more interaction between neighbors and Community Garden members. Include public bathroom, tot lot and benches if possible.
3. Promote, and possibly expand Community Gardens, both Second Start and Growing Gardens at 11<sup>th</sup> and Baker St.
4. Add a sign indicating location of community gardens along Collyer St between 9<sup>th</sup> and 11<sup>th</sup> Aves.
5. Investigate possibility of adding a children's garden or farm concept, or other open community space/playground concept to Habitat for Humanity land located to the north of the Second Start Community Garden along Spring Creek Gulch. Consider adding a Greenhouse and collaborating with youth at Spangler school through the Growing Gardens Cultiva Program.
6. Create a "Local Gardener's Market" for neighbors of the Kiteley Area and gardeners at the Community Gardens, both Second Start and Growing Gardens, can provide fresh produce to neighborhood residents.
7. Create a shade structure for the Growing Gardens Community Garden
8. Look into art and community programs for youth in the gardens with gardening, horticulture classes and art.

## **History and Development**

The City of Longmont was platted in advance of settlement and was one of several American colonization efforts to populate the Colorado Territory. In the 1870's the United States had just finished the Civil War and was in a severe economic depression. In the Colorado Territory the gold boom was over and many of the miners were leaving the region and returning east, or coming down from the mountains to farm the open prairies and river bottoms along the front range. United States colonization of the Colorado Territories was already underway in places like Greeley, and the Chicago-Colorado Colony, which would later become the City of Longmont, was established as a way to promote increased settlement of the west. The United States was not the first to colonize the St. Vrain Valley. Spanish explorers had reached this far north as early as the 1500's and the St. Vrain Valley easily falls within the historical boundaries of New Mexico. The Chicago-Colorado colony actually was located within the 4,096,000-acre Vigil-Saint Vrain Land Grant, one of the last desperation land grants awarded by New Mexico Governor Manuel Armijo in the 1840's in a last ditch effort to save the land for the people of New Mexico in the face of the inevitable war with the United States (We, too, Came to Stay, 5).

The early development of the Kiteley Neighborhood was sporadic and disperse. Houses were scattered along the prairie, usually with one dwelling per block, usually with the oldest and largest homes being built on the lot corners. Property owners later began to subdivide the larger lots into sites with room for two to three dwelling units.

### **The Kiteley's**

William John Kiteley came to the St. Vrain Valley in 1869 and he checked the available land along the north side of the St. Vrain River and chose to homestead a quarter section of land seven miles northeast of Longmont. The first year living there he cut railroad ties from trees along the St. Vrain then floated them down river to a pick up site nearer the tracks.

In 1871 William returned to Wisconsin, married Margaret Cornelia Kalb, and brought his bride and parents, John and Catherine Kiteley back to Colorado with him.

John Kiteley served on the Longmont's original Colony Board of Trustees from 1873 – 90 and was President of Longmont in 1875. He was President of the Farmer's Protective Association, Director of the Longmont Building and Loan Co., and Treasurer of the Longmont Farmers Milling and Elevator Co. He lived until July 23, 1890.

To be near the new high school, William Kiteley, the namesake of the Kiteley neighborhood, built a large brick house, at the corner of 9<sup>th</sup> and Collyer were it still stands with the original iron fence between it and the streets. Kiteley was a founder of the First National Bank and served on the School Board from 1895-1907. He died October 3<sup>rd</sup>, 1907 at the age of 58.

The Kuner –Empson Cannery built in 1887 and the Sugar Factory built in 1902 in the southeast section of Longmont influenced the development of Longmont as a working class town. Workers began to move into the affordable homes in the Kiteley area while the Historic Westside Neighborhood in the City of Longmont became the fashionable district.

The factories played an important role in the housing of the Kiteley Neighborhood as many people came to live and work in Longmont until the factories closed in 1970 and 1977 respectively. In 1965 IBM announced construction of a large plant between Boulder and Longmont, accelerating the pace of growth and the shift of the economic base from agriculture to high technology. In the early seventies the Kiteley Neighborhood began to experience more growth and development as newer, more modern townhomes and infill housing was developed and built in the area. Until the closing of the Kuner-Empson Factory in 1970 and the Sugar Factory in 1977, Kiteley was a vibrant working class neighborhood.

### **The Gibson Manufacturing Company**

The Gibson Manufacturing Corporation, Longmont, Colorado, was founded in March, 1946 by Wilber Gibson and was located on 9<sup>th</sup> Ave. at the railroad tracks. This company was an offshoot of the original company which had been formed by Wilbur's father, Harry Gibson, at Seattle, Washington. The Seattle plant made specially built rail cars and had begun experimentation with tractors.

The decision to produce tractors in Longmont was, at least, partially motivated by the desire to escape a setting where pressure to unionize was great. The factory in Longmont, was located at 9<sup>th</sup> and the railroad tracks, and in 1946 Longmont was a small agricultural community with little or no industry at the time. The millions of dollars invested in the land, plants, and equipment coupled with the job opportunities for hundreds of local residents meant that the company was welcomed with open arms. One of the things Mr. Gibson was famous for was his ability to find parts, when none were available, due to World War II. He often used rear ends and transmissions from other vehicles and modified them to fit his needs for the tractors.



*Refurbished Gibson tractor*

Tractor production had already ceased in 1952 when the company was sold to Helene Curtis Industries of Chicago, Illinois, which, in turn organized it as a division of Fox Metal Company of Denver, Colorado. The intent was to reestablish tractor production in Denver. Instead for approximately seven months in 1953, tractor parts were sold out of the Denver plant but no tractors were made. Production interests were then "leased" to a newly formed company known as Western American Industries in Longmont, Colorado. This new company made approximately 1,000 model D's, SD's, and Super D's before being competed out of the marketplace in 1958. A Western American Industries ad dated 3-25-57 listed the following prices: 'D' \$760.00; 'SD':\$810.00; Super D:\$845.00. Gibson tractors were sold throughout the United States and in 26 foreign countries. Many are still in use with no thought being given to semi-retiring them to shows.

Production of the 'A's, 'D's, and 'E's resulted in an estimated 50,000 to 60,000 total units, whereas there were probably less than 500 each of the 'H's and 'I's made.

In addition to tractors, the Gibson Company was also engaged in the production of forklifts under Government contract for the Navy during the late 1940's and early 1950's. Stories conflict somewhat and there was probably no one single reason for the company's demise. A combination of factors including competition, and pressure to meet production quotas of forklifts at the expense of turning out tractors were probably the chief ingredients in the company's downfall as it was originally known. Wilbur Gibson died in 1959 at the age of 44 from a heart attack.

Today the Kiteley Neighborhood is still a neighborhood of modest residences mingled and 1920's bungalows and more modern homes. Kiteley Neighborhood remains a neighborhood where kids can walk to school, people can walk to Main St. to shop. Wide streets, shady yards, front porches and alley garages create the old time neighborhood setting and small town feel that the Kiteley residents value so much.

### **Civics**

The Kiteley is a newly organized association in the City of Longmont. There are over 475 residences and over 50 businesses/non-profits in the Kiteley Neighborhood. The Kiteley Neighborhood has recently started to hold monthly neighborhood meeting to promote involvement and the Revitalization Plan.

The Kiteley Neighborhood was the second neighborhood to come forward in the Midtown Revitalization Area for the Neighborhood Revitalization Grant. The Kiteley Neighborhood Association is dedicated to promoting neighborhood pride and awareness around the Kiteley's rich history and encouraging neighborhood revitalization, good neighboring and community pride.

## **Kiteley Neighborhood Revitalization Planning Process**

The City of Longmont Neighborhood Revitalization Program is a Longmont City Council and Community Development Block Grant driven initiative to address neighborhood concerns on a level that can make a difference in the community. It has been Longmont's philosophy to engage residents to identify issues, needs and the potential alternatives to address them. There are three basic steps in the planning process. The first is to prepare a detailed inventory of the priorities and concerns of the neighborhood. The second step is to develop a plan that will help ensure the maintenance, preservation and enhancement of the integrity of the neighborhood. The final step is to implement the projects and programs discussed in the neighborhood plan and to maintain communication between the City of Longmont and the Kiteley Neighborhood to monitor compliance to the adopted planning documents.

In order to determine eligibility for Revitalization funding the City created a selection process combining a series of negative and positive indicators. Negative indicators such as of code violations, quality of life police calls and census information were analyzed for neighborhoods throughout the City. The areas that had the highest percentage of negative indicators were then determined as preliminary candidates for grant funding. Within those areas the City then looked at neighborhood assets such as response rate to revitalization surveys, willingness to partner with other residents and the City, organizational skills and ability to define residential issues. In 2008 the City of Longmont proposed the creation of the Midtown Revitalization Area that covered 9<sup>th</sup> Ave on the South and 23rd Ave on the north and Bross St. on the West and the railroad tracks on the east. Neighborhoods in the is area were encouraged to come forward and work with the Community and Neighborhood Resources Division on creating a Neighborhood Action Plan to address issues identified by residents in the neighborhood.

The Kiteley Neighborhood Plan was begun by the Kiteley Revitalization Planning Committee in 2010. During the next six months the Planning Committee gathered data concerning the neighborhood undertook an opinion survey and held public meetings, open houses and outreach events in order to involve residents in the planning process. During the initial brainstorming and survey of the neighborhood residents identified neighborhood assets and areas for improvement. These items were categorized and prioritized into goals and action steps which comprise the Neighborhood Plan. Six interest areas were identified; they include:

- **Traffic and Neighborhood Connectivity**
- **Street Lighting and Public Safety**
- **Pride In Residences & Energy Efficiency**
- **Community Building and Neighborhood Involvement**
- **Main St.**
- **Outdoor Spaces**

In order to promote as much resident involvement in the planning process as possible, all property owners and utility account holders were notified via U.S. mail by the Community and Neighborhood Resources Division of the various meetings. The Revitalization Plan document evolved over discussions at public input meetings and through the input from the neighborhood-wide survey. The following are a list of the neighborhood meetings held during the planning process:

Sept 16, 2009, 2009	First Neighborhood meeting with residents of Kiteley Neighborhood
December 2010	Door to door outreach
December 8 2010	Second meeting with residents
January 2010	First neighborhood survey mailed out to all residents and property owners
February 2010	Second survey mailed out to all residents and property owners in Kiteley
April 2010	Neighborhood boundaries and name chosen
May 2010	Revitalization sub-group planning committee created
June & July 2010	Door to door outreach for survey and input
July 20, 2010	Kiteley Revitalization Visioning session done with input from surveys
July 2010	Neighborhood Revitalization Plan written
October 2010	Neighborhood review and final acceptance of Plan

## **Kiteley Neighborhood Public Input Results**

In order for the Neighborhood Revitalization Plan to function as a shared community vision of the neighborhood revitalization effort, it is vital to identify values and issues important to the entire neighborhood in the plan. Input from the neighborhood about the revitalization process has been compiled from surveys, neighborhood meetings and outreach events, ranked in order of importance and categorized into relevant interest areas. This process will focus the Neighborhood Plan into action steps and give direction to the City and Neighborhood Association on priority areas and implementation strategies. The following information shows the trends from neighborhood input from the various outreach events.

### **Kiteley Neighborhood Association Revitalization Survey**

The Kiteley Neighborhood Revitalization Collaboration Committee decided to survey the neighborhood about their priorities for neighborhood revitalization. The first survey was to gather some basic information about the neighborhood and asked residents to give open ended information about 12 different interest areas. Neighborhood history, people, businesses, geography, community associations, appearance, traffic and safety, schools, faith communities, land use and parks and open space. This survey was used to establish a baseline for neighborhood interests and knowledge. The City received 24 responses.

The second survey was used to establish goals and priorities for the Neighborhood Plan. The survey consisted of 5 questions with room for open ended responses. The goal of the survey was to identify strengths, weaknesses and interests of the residents. The survey was distributed by U.S. mail to all residents, property owners and businesses in the neighborhood. Approximately 750 surveys were sent out, and 8%, or 57, were completed and returned.

The following matrix shows the priorities assigned to neighborhood improvements and interest areas by Kiteley Neighborhood residents who answered the survey. Each time a category was mentioned in the survey results, regardless of which question it fell under, it received one vote or tally. In analyzing the information from the survey results, the neighborhood priorities became clearly evident.

Using the surveys as guide, goals for the Neighborhood Plan were then divided into goals according to priorities determined by the number of responses.

Kiteley Neighborhood Survey Results			
	Strength	Weakness	Don't Know
Traffic	22	25	8
Residential Upkeep	29	20	4
Property Values	13	22	17
Multi Family Housing	2	23	16
Street Lighting	32	15	4
Safety	19	24	8
Main St.	30	10	9
Community Garden	28	8	13
Athletic Field Park	33	9	9
Spring Creek Gulch	15	9	25
Trees	38	6	2
Bike and Walk to Downtown	39	6	4
Sense of Community	19	17	11
First United Methodist Church	35	6	8
Other Faith Community in Area	20	5	22
Spangler School	20	12	19

\* Numerical results correspond to number of answers, not number of respondents

### **Kiteley Neighborhood Association Revitalization Neighborhood Meeting**

On July 20, 2010 the first neighborhood revitalization public input meeting was held. The neighborhood meeting addressed the need to further prioritize neighborhood assets and concerns as identified in the neighborhood survey. Eleven Kiteley Neighborhood residents attended the meeting and were asked to comment on six interest areas as identified from the surveys received, which included: Traffic and Neighborhood Connectivity, Pride in Residences, Street Lighting and Public Safety, Main St., Open Spaces and Trees, Community Building and Neighborhood Involvement.

The following were the priorities for neighborhood revitalization from survey	
Traffic and Neighborhood Connectivity	9
Pride in Residences	8
Street Lighting and Public Safety	9
Main St.	1
Open Spaces and Trees	1
Community Building and Neighborhood Involvement	3

At the same meeting on July 20, residents were asked to rank in level of importance from low to high interest areas and projects for the neighborhood with the following results:

<b>Traffic</b>	
Traffic on Collyer St.	38
Traffic on 11th Ave.	38
On Street Parking	37
Inconsistent Signage	37
Kids Playing in the street	26
Train Noise/Crossings	25
More Street Cleaning	24
<b>Pride in Residences</b>	
Debris in Alleys	44
Multi-family housing not being maintained	41
Property Values	37
Houses not being Maintained	34
Yards and landscaping not being maintained	34
Graffiti	30
<b>Street Lighting and Public Safety</b>	
Speeding	48
Inconsistent Street Lighting	43
Crime	27
Graffiti	27
Crime on Meadow St.	15
<b>Main St.</b>	
Maintenance of Businesses	32
Types of businesses	31
Connections/Buffering	28
Traffic/Noise from Businesses	20
<b>Open Space and Trees</b>	
More lighting in Athletic Field Park	34
Athletic Field Park	33
Community Garden	32
Trees in Neighborhood	30
<b>Bike-ability and Walk-ability of Neighborhood</b>	
Lighting	45
Better connections to bike trails	37
Better designs/connection to Main St.	28
Sidewalks	27
<b>Community Involvement</b>	
Community Events Block Parties	37
Spangler School	30
First United Methodist Church	26

## **Neighborhood Interest Areas**

According to public input received from survey and at outreach events, the following six interest areas have been identified by the Kiteley Neighborhood. They are listed in order of importance.

- *Traffic and Neighborhood Connectivity*
- *Street Lighting and Public Safety*
- *Pride in Residences & Energy Efficiency*
- *Community Building and Neighborhood Involvement*
- *Main St.*
- *Outdoor Spaces*

## Interest Area 1: Traffic and Neighborhood Connectivity

Vision: Kiteley Neighbors envision well designed and maintained streets that encourage the safe movement of automobiles, bicycles, and pedestrians.

*Goal 1.1: Create a safe traffic environment in the Kiteley Neighborhood for all modes of travel including pedestrians and bicyclists.*

Potential Funding: City of Longmont Public Works and Utilities Department, TBA

Partners: Kiteley, Bob Ball and Tyler Stamey, Neighborhood Traffic Mitigation Program, Steve Ransweiler.

### Objectives:

- 1. Improve the Kiteley Neighborhood livability by reducing the impact of vehicular traffic in the neighborhood.**
- 2. Encourage citizen involvement in solutions to neighborhood traffic problems.**
- 3. Take a phased approach to dealing with neighborhood traffic issues and prioritizing capital projects using quantifiable criteria.**
- 4. Use the designated toolbox as set forth in the City of Longmont Traffic Mitigation Program Manual that utilizes a mixture of engineering, education and enforcement methods to be employed to address Kiteley Neighborhood traffic concerns.**
- 5. Ensure that the Kiteley Neighborhood traffic mitigation will be done on a neighborhood basis, not street by street, in order for traffic not to be re-routed from a street of higher classification to one of a lower classification.**
- 6. Promote neighborhood consensus on the appropriate use of traffic mitigation tools throughout the traffic calming proposal development process.**

### Action Steps

2010

- Determine areas that are of high traffic and speeding concerns such as Collyer St. and 11<sup>th</sup> Ave. and request police patrol at high volume times.
- Request that a speed trailer be placed in high volume and high speed violation areas to alert motorists when they are surpassing the speed limit.
- Request “Slow down in our Neighborhood” yard signs that encourage speeders to slow down from Tyler Stamey, Traffic Mitigation Program Coordinator, for high traffic streets and areas where speeding is a perceived problem.
- Add a crosswalk at 11<sup>th</sup> and Emery St. by Athletic Field Park and First United Methodist Church., and Wild Plum Head Start Center.
- Improve pedestrian accessibility and safety at crosswalk at 9<sup>th</sup> Ave. and Collyer St. ( In 2010 pedestrian - vehicular accident rates do not warrant an improvement of the crosswalk).
- Research if current traffic speed signs are adequate and visible in the neighborhood. If determined more signage is needed or if current signage is not

visible to motorists, submit additional sign requests through Tyler Stamey, Traffic Mitigation Program.

- Coordinate and maintain sign visibility and sight distance visibility issues through Longmont Code Enforcement.
- Determine if police patrol, citizen patrol and signage has mitigated the traffic problems in the Kiteley Neighborhood, or if further mitigation is needed.

2011

- If it is determined that further traffic mitigation is needed in specific areas of the Kiteley Neighborhood the neighborhood may seek remedies through the Neighborhood Traffic Mitigation Program.
- Proposal brought before the neighborhood for a vote and prioritization of implementation of proposed projects within City budget constraints.

### ***Goal 1.2: Bike Lanes***

Potential Funding:

City of Longmont Parks Department, Conservation Trust Fund, Traffic Engineering, Live Well Longmont

Partners: Kiteley Neighborhood, City of Longmont Parks and Open Space Department, Traffic Engineering

#### **Objective 1.2.1**

**Create on street bike lanes and sharrows on 11<sup>th</sup> Ave. from Main St. to the Spring Creek Gulch and the Community Gardens.**

Action Steps

2010

- Submit request to Tyler Stamey, Bob Ball and Eric Fosdick

#### **Objective 1.2.4**

- 1. Encourage development of off street trail along the Spring Creek Gulch connecting Kiteley Neighborhood to Kensington Park and St. Vrain Greenway.**
- 2. Encourage the development of an off street bike trail system that includes an connection underneath the railroad tracks improving connections to parks and schools to the east of the Kiteley Neighborhood.**

Potential Funding: CIP

Partners: City of Longmont Parks Department, Steve Ransweiler, Conservation Trust Fund, Live Well Longmont.

Action Steps

2010

- Meet with Steve Ransweiler in October 2010
- Look at design of trails and connectivity issues and have Kiteley Neighborhood issues included into design of Spring Creek Gulch off street bike trail.

Ongoing

- Advocate City Council for CIP funding to be allocated for permanent connection to the other greenways including the underground trail connection under the railroad tracks.

***Goal 1.3: Improve on-street parking for Kiteley Neighborhood.***

**Objective 1.3.1**

**Improve on-street parking standards in high impact areas in Kiteley Neighborhood.**

Potential Funding: Traffic Engineering

Partners: Kiteley Traffic and Parking sub-committee, Tyler Stamey, Traffic Engineer, City of Longmont Public Works Division 303-651-8323.

Action Steps

2010

- Create a Kiteley Traffic and Parking sub-committee.
- Install signs prohibiting parking “to the corner” to prevent sight obstructions in intersections on an as needed basis.
- Work with Tyler Stamey, Traffic Engineer, on installation of signage.

## Interest Area 2: Public Safety and Lighting

Vision: Kiteley Neighbors envision a place where people walk safely at all times of the day. Children play throughout the neighborhood safely and are involved in organized activities. A strong relationship with the Police Department helps create a crime and drug free neighborhood.

### ***Goal 2.1: Improve the lighting in the Kiteley Neighborhood.***

Funding: Longmont Power and Communications

Partners: Kiteley, City of Longmont Power and Communications Department

### **Objectives**

- 1. Provide residential street lighting with a historic design where none currently exist for the blocks in the Kiteley Neighborhood where the majority of residents on the block agree that streetlights are the best alternative for the street.**
- 2. Add to the historic charm of the Kiteley Neighborhood with lighting that reflects the history and charm of the neighborhood.**
- 3. Help deter crime in the Kiteley Neighborhood by having adequately lit streets.**
- 4. Install residential street lighting in the Kiteley Neighborhood for as many blocks as permitted within the budget limit each year as work load and other requests allow.**

### Action Steps

2010

- Create Kiteley Neighborhood lighting sub-committee that will work closely with Jodi Hammonds of Longmont Power and Light on guidelines and design of the program.
- The sub-committee determined the blocks in the Kiteley Neighborhood that currently do not have street lighting. They are the 900, 1000, 1100, 1200 Blocks of Emery, 900 & 1100 block of Atwood, 1100 block of Baker St., and 11<sup>th</sup> Ave. East of Collyer St.
- Alleys identified as in need of lighting are the following: Corey- Collyer 9<sup>th</sup> – 11<sup>th</sup>, Collyer – Atwood 10<sup>th</sup> – 11<sup>th</sup>, Atwood-Baker between 11<sup>th</sup> – 12<sup>th</sup>.
- Kiteley Neighborhood lighting sub-committee will contact one resident on each block that will request placement on the Longmont Residential Street Lighting Program list by calling Jodi Hammonds and Dave Douglas.
- Once the Kiteley Neighborhood Lighting Subcommittee places as many blocks as needed or interested on the program request list, each block will be considered on a first come first serve basis. Longmont Power Company will attempt to install new residential street lighting for as many blocks as permitted within the budget limit each year as the work load allows.

- Kiteley Neighborhood Lighting Subcommittee along with Longmont Power Company staff member Jodi Hammonds & Dave Douglas will determine which areas of the neighborhood are priority to begin the process, according to needs based on crime, resource and community issues.
- Longmont Power & Communications will hold a public meeting, inviting all affected residents and property owners (if a property is a rental) to discuss the process, to review the location of the street lights, and to vote on installation. Residents and property owners who are unable to attend the meeting can cast their vote by mail.
- Streetlights will be installed on blocks where 70% of the households on the block agree according to the schedule identified by the Kiteley Neighborhood Lighting Subcommittee and the Longmont Power & Communications staff.

***Goal 2.2: Athletic Field Park***

Funding: Midtown Revitalization Grant \$55,000

Potential Funding: City of Longmont Parks and Open Space Division.

**Objective 2.12: Add lighting in on the east side of Athletic Field Park with a historic design similar to those already existing in the Kiteley Neighborhood as provided by LPC.**

Funding: LPC Residential Lighting Program 2010 CIP funding.

Action Steps

2010

- Coordinate installation of historic lighting with, City of Longmont Parks and Open Space Division and LPC

***Goal 2.3: Maintain or improve the feeling of a safe Kiteley Neighborhood.***

In Kind Funding:

Longmont Police Department, staff time and resources \$5,000

Partners: Kiteley Neighborhood, Kay Armstrong, Community Programs Coordinator, Longmont Police Department, 303-774-4440

**Objectives**

- 1. Deter crime and train neighbors to assist police with neighborhood surveillance in the Kiteley Neighborhood through the development of a Neighborhood Watch Program.**
- 2. Strengthen the collaborative relationship between the Longmont Police Department and the Kiteley Neighborhood through monthly or bi-monthly**

- communication with Beat Officer assigned to the Kiteley Neighborhood.**
- 3. Build a stronger and safer community by creating a Community Safety Program connecting local neighbors to one another to promote safe walking in the neighborhood after dark, protecting Athletic Field from unwanted crime, and increasing awareness around gang and graffiti issue in the neighborhood.**
  - 4. Eliminate graffiti and youth gang activity in the Kiteley Neighborhood.**

#### Action Steps

2010

- Create a Kiteley Neighborhood Crime and Neighborhood Watch subcommittee that will work closely with Kay Armstrong, Community Services Program Administrator, Longmont Police Department, and Beat Officers on the design and implementation of the program.
- Recruit volunteers to help with the Neighborhood Watch subcommittee.
- Train Kiteley Neighborhood residents to assist Police with neighborhood surveillance through attending the Longmont Citizen's Police Academy that educates citizens and young people on Police procedure and neighborhood safety.
- Analyze neighborhood needs for increased surveillance and patrol needs in conjunction with Beat Officer.
- Work in conjunction with the Beat Officers to provide a crime prevention, safety tip of the month and neighborhood crime activity reports at the scheduled neighborhood meetings.
- Work in conjunction with the Beat Officer and Kay Armstrong to have a personal safety training for neighborhood residents at one Kiteley Neighborhood meeting a year.
- Invite representatives from the Longmont Police and Fire to speak on topics or services that may be of interest to residents e.g., disaster preparedness, holiday safety, CPR, etc.
- Develop ongoing articles for the Kiteley Neighborhood newsletter that inform residents about neighborhood safety, crime prevention tips and update local residents on current crime statistics and important issues for the Kiteley Neighborhood

2011

- Design guidelines and structure for the Community Safety Program.
- Structure ongoing communication with the Longmont Police Beat Officer and the Kiteley Neighborhood Watch Subcommittee.
- Create and buy T-shirts that identify Community Safety Patrol volunteers.
- Bring awareness to personal safety issues in the neighborhood by giving away safety promotional items such as pocket sirens to neighborhood residents along with tips on how to use them.

2012 and ongoing

- Continue to recruit volunteers for Neighborhood Watch Subcommittee.

- Maintain communication with Longmont Police Department through Beat Officer about important neighborhood crime and safety issues.
- Inform residents about important safety issues through ongoing articles in the Kiteley Neighborhood bi-monthly newsletter.

***Goal 2.4 Youth Gang Intervention/Resources***

**Objectives:**

- 1. Deter gang crime and train neighbors to assist police with neighborhood surveillance in the Kiteley Neighborhood through the development of a Neighborhood Watch Program.**
- 2. Strengthen the collaborative relationship between the Longmont Police Department and the Kiteley Neighborhood through monthly or bi-monthly communication with the Gang and Crime Suppression Unit (GCSU) Officer assigned to the Kiteley Neighborhood.**
- 3. Build a stronger and safer community by creating a Community Safety Program connecting local neighbors to one another to promote safe walking in the neighborhood after dark, protecting Athletic Field Park from unwanted crime, and increasing awareness around gang and graffiti issue in the neighborhood.**
- 4. Eliminate graffiti and youth gang activity in the Kiteley Neighborhood.**

Action Steps

2010

- Create a Kiteley Neighborhood Crime and Gang/Graffiti Neighborhood Watch subcommittee that will work closely with Steve Deal, GCSU, Longmont Police Department, on the design and implementation of the program.
- Recruit volunteers to help with the Gang/Graffiti subcommittee.
- Train Kiteley Neighborhood residents to assist police with neighborhood surveillance through attending the Longmont Citizen's Police Academy And through informal education at neighborhood meetings that educates citizens and young people on police procedure and neighborhood safety.
- Analyze neighborhood needs for increased surveillance and patrol needs in conjunction with GSCU.
- Work in conjunction with the GCSU Officer to provide a crime prevention and safety tip of the month and neighborhood crime activity reports at the scheduled neighborhood meetings.
- Work in conjunction with the GCSU and Kay Armstrong to have a personal safety training for neighborhood residents at one Kiteley Neighborhood meeting a year.
- Invite representatives from the Longmont Police and Fire Departments to speak on topics or services that may be of interest to residents e.g., disaster preparedness, holiday safety, CPR, etc.
- Develop ongoing articles for the Kiteley Neighborhood newsletter

## **Interest Area 3: Pride in Residences & Energy Efficiency**

Vision: In the Kiteley Neighborhood, we desire to create a neighborhood that supports a high quality of life for all of its residents. Clean, well-maintained structures demonstrate the pride neighbors have for the Kiteley Neighborhood and the respect that they have for one another. Neighbors work together to improve upon their residences, supporting those who may need assistance with property upkeep.

### ***Goal 3.1: Eliminate code violations within the Kiteley Neighborhood.***

Funding CDBG: Part Time Code Enforcement and Rental Inspection Officer \$35,000 annually – Midtown wide

Partners: Jon Clarke, City of Longmont Community and Neighborhood Resources Division, 303-651-8721; Kathy Fedler, City of Longmont Community Development Block Grant Coordinator, 303-651-8736, Shannon Stadler, City of Longmont Code Enforcement 303-651-8695.

#### **Objectives:**

- 1. Decrease the number of external code violations within the neighborhood.**
- 2. Seek compliance for community maintenance and living standards in the Kiteley Neighborhood by providing funding for a part time Code Enforcement Employee in 2009, 2010 & 2011.**
- 3. Inform Kiteley Neighbors on code enforcement rules and regulations through distribution of materials and articles about current code enforcement issues in the Midtown quarterly newsletter.**
- 4. Inform Kiteley Neighbors about code related issues by providing speakers at association meetings.**

#### Action Steps 2010

- Design Interdepartmental Management Agreement between Community and Neighborhood Resources Division, CDBG office and Code Enforcement detailing the responsibilities of the part time Code Enforcement Officer and supervisory responsibilities for the employee.
- Organize times for the employee to meet with neighborhood leaders to communicate directly about on-going code enforcement issues and updates and to improve interactions between City of Longmont Code Enforcement Staff and Kiteley Neighborhood residents and Neighborhood Association.
- Write short articles about code enforcement and neighborhood maintenance issues for neighborhood newsletters and web page.

### ***Goal 3.2: Continue to improve the condition of the housing stock within the Kiteley Neighborhood***

Funding: Habitat for Humanity, CDBG City of Longmont, Housing Rehab Programs

Partners: Kiteley Neighborhood Board, Kathy Fedler, CDBG Coordinator City of Longmont, 303-651-8736.

### Objectives

1. **Design a program in conjunction with Habitat for Humanity that allows Kiteley Neighborhood residents and property owners access to assistance, regardless of income, to improve the exterior appearance and front yards of their residences.**
2. **Upon committee review, approve applying properties and assist qualifying residents in improving the neighborhood values for improving the exterior maintenance and condition of housing stock in the neighborhood.**
  - a. **Exterior maintenance**
  - b. **Tree trimming**
  - c. **Minor landscaping and upkeep**
  - d. **Minor interior repairs**

- Repeat application process as needed and volunteers are available.

### *Goal 3.3: Promote Clean and Safe Streets and Alleyways.*

Partners: Kiteley, City of Longmont Code Enforcement, City of Longmont Solid Waste Division, 303-651-8418

#### **Objective 3.3.1:**

**Promote a clean and safe neighborhood and minimize illegal dumping the Kiteley alleys by organizing one Large item pick up and trash day for the Kiteley Neighborhood.**

Funding: City of Longmont Solid Waste Department

\$15,000

#### Action Steps

2010, 2011, 2012

- Plan large item pick up and trash day and notify Longmont Solid Waste Division well in advance. Do NOT plan clean up day on the same day as the City of Longmont scheduled Stop and Drop days (5 a year, call, Longmont Solid Waste Division, 303-651-8418, for schedule).
- Kiteley Clean Up Sub-Committee will arrange for a back end loader truck or trucks, and other equipment with the City of Longmont Solid Waste Division for trash removal and large item pick up in the streets.
- Kiteley neighbors will produce materials to distribute explaining the event and requirements for proper pick up and placement of items to be picked up.
- Coordinate youth and neighborhood volunteers for clean up day.

- Notify Kiteley residents, through the newsletter, about the neighborhood large item pick up/clean up event.

**Objective 3.3.2:**

**Promote clean and safe alleys by organizing one alley way clean up project a year that includes trash, weed and graffiti abatement.**

Funding: Kiteley Revitalization Grant: Contractors fees, Tool rental, Paint and Supplies \$5000

City of Longmont Solid Waste Division, staff overtime hours and trucks \$1,800/event (for 3 years)

Action Steps

2011

- Kiteley Neighborhood Clean Up Subcommittee will assess alleys to determine areas that need attention.
- Hire contractor ( in 2011 ONLY) to clean alleys ways of volunteer trees and overhanging limbs that block alley, create unsafe areas for visibility, and create an overall picture of uncleanness in the alleys.
- Have Kiteley Neighborhood announce alley clean up and promote the long term maintenance of the alley as the property owners/renters responsibility.

Action Steps

2012

- Plan alley clean up day, which will include Kiteley Neighborhood volunteers, and notify the City of Longmont Solid Waste Division well in advance. Do NOT plan alley clean up day on the same day as the City of Longmont scheduled Stop and Drop days (5 a year, call, Longmont Solid Waste Division, 303-651-8418, for schedule).
- Kiteley Neighborhood Clean Up Subcommittee will assess alleyways to determine areas that need attention with graffiti abatement, weed and trash removal.
- Kiteley Neighborhood Clean Up Sub-committee will arrange for a truck or trucks with the City of Longmont Solid Waste Division for trash removal and large items and green waste in the alleys.
- Kiteley neighbors will rent needed tools.
- Coordinate youth and neighborhood volunteers for clean up day.
- Notify Kiteley residents, through the postcards, Midtown newsletter, about the alleyway clean up event.
- Provide paint and equipment for graffiti abatement for clean up.

2011 - 2012

- Repeat: Plan annual alleyway clean up.
- Have Kiteley Neighborhood volunteers work with the NGLA on revising City of Longmont Code Enforcement Statutes to create a more comprehensive code that

would prevent further overgrowth of volunteers trees and other intrusive plants in the alley way.

***GOAL 3.4 Multi-family maintenance***

**Objective:**

**Improve the quality and safety of rental properties in Midtown by creating and implementing a Crime Free Multi Housing Program where between 2010 – 2013, 10% of the multi-unit housing properties in Midtown will have participated in the Crime Free Multi Housing Program.**

Partners: Kiteley, Midtown Revitalization Program, Longmont Police Department; Officer, Sara Aerne

Funding: Midtown Revitalization Grant annually Midtown wide \$30,000

Action Steps:

2010

- Provide loan and matching grants for property improvements
- Police Department will conduct on-going Crime Free Multi Housing trainings for property owners, beginning February, 2010.
- Advertise Crime Free Multi Housing grants through trainings and neighborhood meetings.

***Goal 3.5.: Reduce energy use and carbon footprint of residences in the Kiteley Neighborhood.***

Funding: LPC, Boulder County Neighborhood Energy Sweep Program.

Partners: LPC, Boulder County

**Objective:**

- Do a one time Energy Sweep of the Kiteley Neighborhood on October 2, 2010.

***Goal 3.6 Enhance the existing community forest through the creation of a Kiteley Neighborhood Tree Planting Program.***

Funding: Forestry, Community and Neighborhood Resources

**Objectives**

- 1. Fill in current gaps on City right-of-way with 2 inch shade and ornamental trees.**
- 2. Improve the diversity of trees in the Kiteley neighborhood by adding ornamental and shade trees to the current community forest.**

## Action Steps

2009

- Identify potential residential locations which provide neighborhood benefit.
- Offer one inch caliper trees for \$1 for residents in the Midtown Revitalization Area
- Announce planting in Midtown Revitalization City of Longmont newsletter to promote event.

## **Interest Area 4: Community Building and Neighborhood Involvement**

Vision: Strengthen the collaboration and communication between Kiteley residents by supporting community events, educational opportunities and new initiatives that promote unity, communication and understanding. Value and respect the intergenerational and intercultural diversity of our neighborhood and balance the needs and practices of all groups.

***Goal 4.1: Encourage and increase the level of participation in neighborhood activities.***

Potential Funding: Neighborhood Group Leaders Association of Longmont (NGLA), Neighborhood Activity Grant

### **Objective**

**Improve the quality of life by creating good relationships among neighbors.**

### Action Steps

#### Ongoing

- Host a FUN Neighborhood Picnic every year at nearly the same time, so it becomes a habit.
- Encourage blocks in the Kiteley Neighborhood to participate in the Discover Neighbors, Discover Homes Program through the City of Longmont
- Community and Neighborhood Resources Division where a block is granted up to \$100 for a block event if they map their block of neighbors.
- Host one Tamales and Talk program a year in order to increase the awareness and communication between the Hispanic and Non-Hispanic communities in the Kiteley Neighborhood with Tamales and Talk Coordinator.
- Create babysitting, snow shoveling and lawn care co-ops, and/or a neighborhood directory, in the neighborhood who are willing and able and post them in the newsletter free of charge.
- Create opportunities where neighbors of diverse cultural backgrounds can understand other's values and begin to share their own in a constructive and communal setting.
- Provide information about community and public resources and events with the neighborhood through articles in the Kiteley Neighborhood newsletter.
- Promote the Longmont Neighborhood Leadership Program sponsored by the City of Longmont's Community and Neighborhood Resources Division and encourage new members from the Kiteley Neighborhood to participate every year to learn more about the City of Longmont and leadership techniques.
- Create recognition programs to acknowledge resident participation and volunteer work in the Kiteley Neighborhood.

***Goal 4.2: Increase the level of awareness surrounding community wide issues within the Kiteley Neighborhood.***

## **Objective**

**Improve the means of communication and involvement throughout the Kiteley Neighborhood.**

Funding Neighborhood Group Leaders Association of Longmont (NGLA)

Action Steps:

### Ongoing

- Recruit new volunteers throughout the year to share information about the neighborhood organization with new Kiteley residents.
- Create an incentive program with gift certificates, money, gifts or other institutions that values attendance at monthly Kiteley meetings and involvement in neighborhood program.
- Create a “neighbor helping neighbor” team to provide volunteer assistance to a resident in need for minor home repair or yard work that is also placed on the neighborhood web page.
- Include information on property maintenance, code issues, crime and safety issues, upcoming neighborhood events and meetings in the Kiteley newsletter.
- Create a neighborhood list serv, or e-mail list that will update residents with access to email about neighborhood events and happenings.
- Build relationships with the local media and share upcoming newsworthy events in the Kiteley Neighborhood.

## **Interest Area 5: Business District**

Vision: Kiteley residents value Historic Main Street and support the continued growth of mixed use neighborhood oriented projects and maintaining adequate transition zones between busy Main Street and the neighborhood. Neighbor's understand Kiteley's most significant attribute is its historic character and small town feel, an amenity that serves as a reminder of the enduring influence that the vision and planning of Longmont's early planners had on the community.

***Goal 5.1: Beautify the neighborhood and Business District by strengthening business code compliance through the creation of proactive and systematic code enforcement.***

Funding: Midtown Revitalization \$35,000 annually –Midtown wide

Partners: Jon Clarke, City of Longmont Community and Neighborhood Resources Division, 303-651-8721; Kathy Fedler, City of Longmont Community Development Block Grant Coordinator, 303-651-8736, Shannon Stadler, City of Longmont Code Enforcement 303-651-8695.

### **Objectives:**

- 1. Decrease the number of external code violations within the Main St. Business District.**
- 2. Inform Main St. businesses on Code Enforcement Rules and Regulations through distribution of materials and articles about current code enforcement issues in the Midtown quarterly newsletter.**
- 3. Inform Kiteley businesses about code related issues by providing speakers at association meetings.**

***Goal 5.2: Promote the Midtown Development Plan for Main St.. Coordinate with the City of Longmont Planning Department for the strategic revitalization of Kiteley Business Corridor.***

Potential Funding: Economic Development

Partners: Brad Schol, Economic Development Planning Manager, 303-651-8319; Erin Fosdick, Senior Planner, 303-651-8336; Ava Pecherzewski, Senior Planner, 303-651-8735.

### **Objectives:**

- 1. Demonstrate the pro-business attitude of the Kiteley Neighborhood.**
- 2. Identify immediate needs, future plans and opportunities in the Main St. Corridor.**
- 3. Increase competitiveness of local businesses.**

- 4. Develop a sustainable program that results in business retention and expansion.**
- 5. Improve zoning consistency along Main St. in relation to new development.**
- 6. Improve walk ability and neighborhood “feel” of Main St. with improved streetscape and sidewalks.**
- 7. Improve current building stock on Main St. through access to loans, funding and professionals for improvements.**
- 8. Improve communication and connectivity between Neighborhood and Business District.**

Action Steps:

2010

- Collaborate with Economic Vitality and Business Outreach Team (BOT), the Business Retention and Expansion Program with the City of Longmont, to survey business in the lower Midtown Revitalization area along Main St..
- Visit and interview businesses in the Midtown Area with the State of Colorado Synchronist Survey with 10 additional questions designed to focus on the Midtown Area and Main St. Corridor.
- Use the interview to introduce key staff, provide information about the Midtown Revitalization effort and the Main St. Corridor Plan, provide information about available programs and services, respond to specific requests, and to learn about business needs, plan and attitudes.
- Survey approximately 20% of the businesses located in the Midtown Revitalization Area between 9<sup>th</sup> Ave. and Mountain View Ave. before March 2011.

2011

- Compile information from the BOT and Midtown business surveys
- Look for similarities and commonalities among business owners from survey and design projects programs for the lower Midtown Revitalization along Main St. with this information.

## Interest Area 6: Outdoor Spaces

Vision: Kiteley Neighbors envision clean and safe public and outdoor spaces that are gathering places for neighbors, welcoming people of all ages and backgrounds and are supportive of a variety of community interests and activities.

### *Goal 6.1 Athletic Field Park*

#### **Objective:**

**Create a small playground area or tot lot on the north end of Athletic Field Park. Many families with small children use the space, yet there is no play equipment in the park. Adding a small play area would allow for smaller children to play on while older siblings are at practice or playing in the open area.**

Funding: Midtown Revitalization CDBG

\$55,000

Partners: Paula Fitzgerald, Engineering

#### Action Steps:

2010

- Confirm with David Hollingsworth with Public Works and Storm Drainage that a playground is feasible at Athletic Field Park.
- Begin talk with City of Longmont Parks and Recreation about a tot lot or small playground design.

2011

- Mail meeting invitations to all Kiteley Neighborhood residents
- Gather community input about park improvements and playground design via a survey of Kiteley and via U.S. mail and Zoomerang online surveys.
- Prioritize ideas to be made to the park and playground area and communicate ranking to City of Longmont Parks and Open Space Department.
- Publicize decisions and priorities in the neighborhood newsletter and neighborhood website to assure buy-in from entire community.
- Coordinate with Paula Fitzgerald, City of Longmont Parks and Open Space Department, about matching funds and other grant opportunities that the Kiteley Neighborhood can apply for in order to further improve the park.

### *Goal 6.2 Spring Creek Gulch*

#### **Objective 6.2.1**

**Create a formal public space adjoining the Gardens Second Start and 11<sup>th</sup> and Baker so neighbors feel more welcome to the area and to encourage more appropriate use of a marginalized space. Currently the area around the Spring Creek Gulch is weedy, a target for graffiti and dark at night. Include tot lot, shade structure, benches or seating area and public restroom if space allows.**

Potential Funding: City of Longmont Parks and Recreation, CIP

Action Steps

- Begin talk with City of Longmont Parks and Recreation about development of area or small playground design.
- Collaborate with Steve Ransweiler, coordinator of the 10 year plan for off street bike trails.

2011 and/or ongoing

- Mail meeting invitations to all Kiteley Neighborhood residents.
- Gather community input about park improvements and playground design via a survey of Kiteley and via US mail and Zoomerang online surveys.
- Prioritize ideas to be made to the Spring Creek Gulch and open area and communicate ranking to City of Longmont Parks and Open Space Division.
- Publicize decisions and priorities in the neighborhood newsletter and neighborhood website to assure buy-in from entire community.
- Coordinate with Steve Ransweiler, City of Longmont Parks and Open Space Division, about matching funds and other grant opportunities that the Kiteley Neighborhood can apply for in order to further improve the area.

***Goal 6.3 Community Gardens***

**Objective 6.3.1**

**Add signs on Collyer St. pointing east on 11th Ave. towards the Kiteley Neighborhood Community Gardens would be welcome in terms of educating the rest of Longmont about some of our more unique neighborhood assets.**

Potential Funding: City of Longmont, Traffic Engineering

Action Steps

2010

- Submit request to Tyler Stamey, Traffic Engineering

**Objective 6.3.2**

**Add a shade structure to the Growing Gardens Community Garden and assist with painting the shed with art or graffiti art in the area.**

Potential Funding: Growing Gardens Community Garden

\$5,000

Action Steps

2011

- Collaborate with Growing Gardens staff on design and build date.
- Invite Kiteley Neighborhood to come and assist with the shade structure build as volunteers.
- Collaborate with GRIP staff on date and on art project for shed painting project.

### **Objective 6.2.3**

**Expand the Community Gardens area behind the Second Start Community Garden, which is currently owned by Habitat for Humanity, to include a greenhouse or other children’s farm educational area. To be used by local gardeners and both Second Start and Growing Gardens and community programs for youth with gardening, classes and art through connections at Spangler School, GRIP Program, Cultiva, Mesa and other youth programs.**

Potential Funding: Growing Gardens, Habitat for Humanity, Second Start, Global Children’s Gardens

Partners: Second Start Community Garden, Habitat for Humanity, Global Children’s Gardens, Growing Gardens Cultiva Program

#### Action Steps

- Begin talks with City of Longmont Parks and Recreation and other involved parties on Spring Creek Gulch about development of area or small playground design.
- Collaborate with all parties and Steve Ransweiler, coordinator of the 10 year plan for off street bike trails.

### **Objective 6.2.4**

**Create a “Local Gardener’s Market and Vegetable Exchange” for neighborhood gardeners of the Kiteley Area and gardeners at the Community Gardens. Both Second Start and Growing Gardens as well as local at home gardeners can provide fresh produce to neighborhood residents for barter or sale.**

Potential Funding: Live Well Longmont

Partners: Live Well Longmont, Second Start Community Garden, Growing Gardens,

#### Action Steps

2011

<b>Kiteley Neighborhood Budget</b>			
<b>Revitalization Plan Area</b>	<b>Midtown Revitalization Funding - allocated</b>	<b>City of Longmont Funding- to date</b>	
			<b>Partners</b>
<b>Traffic and Neighborhood Connectivity</b>			
Traffic Mitigation Collyer St.			Traffic Engineering
bulb out 11th Ave. & Collyer		<b>\$1,603</b>	Traffic Engineering
Additional Signage 11th and Collyer		<b>\$625</b>	Traffic Engineering
No Parking Signs from here to corner, 9th & Kimbark, Emery, & Corey Sts.		<b>\$250</b>	Traffic Engineering
Crosswalk Improvement at 9th and Collyer			Traffic Engineering
Crosswalk at 11th Ave. & Emery St.	\$1,000		Live Well Longmont
Bike Lane painted 11th Ave from Main St. to Spring Creek Gulch			Traffic Engineering, Live Well Longmont
Off street bike trail developed along Spring Creek Gulch			Parks and Rec.
Underpass for railroad crossing for proposed off street bike trail at Spring Creek Gulch			CIP
<b>Street Lighting and Public Safety</b>			
Street Lights 900, 1000, 1200 Emery, 900,1100 Atwood, 1100 Baker, 11th Ave.		<b>\$112,000</b>	LPC
Alley Lights - Corey, Collyer and Atwood		<b>\$3,600</b>	LPC
Athletic Field Park Lights		<b>\$32,000</b>	LPC
Neighborhood Watch & Beat Officers			LPD
Gang and Graffiti			LPD
Speeding Enforcement			LPD
<b>Pride in Residences</b>			
Code Enforcement	\$35,000 annually (Midtown wide)		
Code Enforcement Special Projects	\$5,000 annually (Midtown wide)		
Large Item Pick Up - August 20th & 27th 2010		<b>\$6,000</b>	Solid Waste
Large Item Pick Up 2011			Solid Waste
Alley Clean Up - One time with contractor (2011)			
Annual Volunteer Alley Clean Up			
Housing Stock Improvements			Habitat for Humanity, CDBG housing programs
Crime Free Multi-Housing	\$45,000 (Midtown wide)		
Tree planting program		<b>\$4,800</b>	(Midtown Wide) CNR Staff time and Forestry
Energy Sweep Kiteley Neighborhood October 2010		<b>\$15,000</b>	Boulder County, LPC
<b>Community Building and Neighborhood Involvement</b>			
Neighborhood Events			NGLA
Local Gardener's Market			Live Well Longmont
Neighborhood Identification Signs	\$5,000		
<b>Main St.</b>			
Create a Midtown Business Association			Economic Development
Code Enforcement	see pride in residences		
Development of Business Corridor			Economic Development
<b>Open Spaces</b>			
Create playground at Athletic Field Park/Boulder County Courthouse	\$55,000		
Park Space between Community Gardens along Spring Creek Gulch			Trails CIP
Shade Structure in 11th and Baker Gardens			Growing Gardens
Art programs for community gardens			Growing Gardens
Develop open space on Habitat Land			
Street signs along Collyer St. and 11 <sup>th</sup> Ave. indicating location of Community Garden		<b>\$165</b>	Traffic Engineering

## Glossary

**CDBG:** Community Development Block Grant. The US Federal Government created the Community Development Block Grant program with the passage of the Housing and Community Development Act of 1974. It streamlined the Federal Housing and Community Development Grant application and allows local governments to apply for a variety of federal housing and community programs in one application.

**Conservation Trust Fund:** The Conservation Trust Funds revenues are the City's share of state lottery proceeds. By state law, these funds can only be used for the acquisition, development and maintenance of new conservation sites. Conservation Trust Funds are currently dedicated to St. Vrain Greenway projects.

**CIP:** A Capital Improvement Program. A Capital Improvement Program is a planning document that presents the city's capital infrastructure needs for a five year period. The first year's projects in a CIP become that year's Capital Budget. In Longmont the CIP is revised every year. In Longmont, the Capital Budget is included in the Operating Budget, showing all of the capital and operating expenses combined. Projects scheduled in the following four years are included in the CIP to show what the Council's priorities are at present time.

**In-Kind:** Dedication of resources to support an effort that is not a monetary contribution.

### Bibliography

Boyles, B.L. (Billy); The St. Vrain Valley...Its Early History, The St. Vrain Press, Longmont CO, 1967.

Downer-Durning, Mabel; The Chicago-Colorado Colony Founding of Longmont 1871-1872, Mabel Downer Durning, 1975.

1998 Survey of the Longmont Historic Eastside Neighborhood; Colorado Historical Society, 1998.

Longmont Times-Call, Beet Sugar One of the Keys to Area History , 3/27/1971.

The Longmont Hispanic Study; We, too, Came to Stay: A History of the Longmont Hispanic Community; Educational Task force of El Comite, USA,1988.

Newby, Betty Ann; The Longmont Album, History and Folklore of the St. Vrain Valley, The Donning Company Publishers, USA, 1995.

St. Vrain Historical Society; They Came to Stay: Longmont Colorado, St Vrain Historical Association, Longmont Printing Company, 1971.

## **Get Involved in the Revitalization of the Kiteley Neighborhood**

To find out how you can get involved please contact a Kiteley Revitalization Committee Board Member or:

For more information, contact:

Jon Clarke  
Community and Neighborhood Resources Supervisor  
Community and Neighborhood Resources Division  
Civic Center Complex  
350 Kimbark St.  
Longmont, CO 80501  
Phone: 303-651-8721  
E-mail: [jon.clarke@ci.longmont.co.us](mailto:jon.clarke@ci.longmont.co.us)

Or

Tanya Ferencak  
Neighborhood Revitalization Specialist  
Community and Neighborhood Resources Division  
Civic Center Complex  
350 Kimbark St.  
Longmont, CO 80501  
Phone: 303-651-8637  
E-mail: [Tanya.ferencak@ci.longmont.co.us](mailto:Tanya.ferencak@ci.longmont.co.us)