

WIRELESS BROADBAND YOU CONTROL



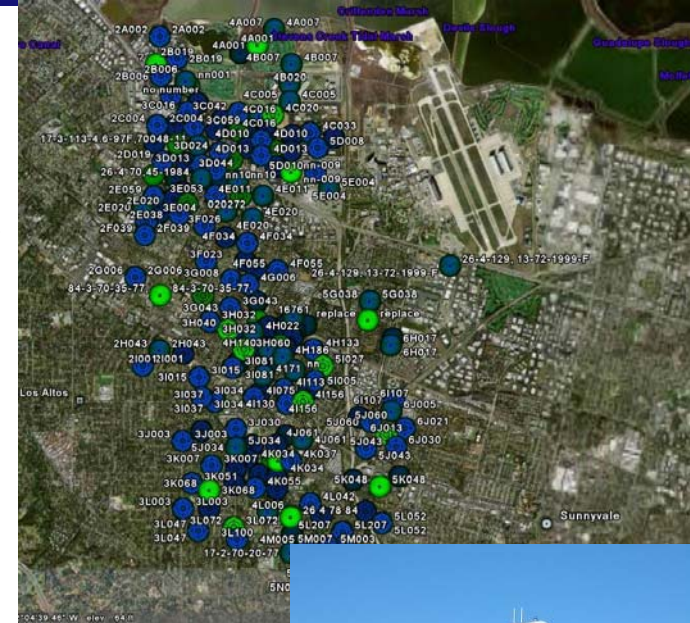
**Metro Mesh Briefing
City of Longmont, CO
January 22nd, 2010**

Ron Pequette
Western Region Director



- Mountain View, CA

- 12 sq miles, fixed nodes
- Free Community Access
 - 24,000 unique users/month; over 5,000 users/day
 - +650 gigabytes daily
 - >100 different types of Wi-Fi client devices
- Water AMR
 - Pilot in new housing development; plans to use for 4 new developments underway
 - Replacing ~500 C&I meters, 80 reclaimed water meters; plan to use Google network for backhaul



Oklahoma City

- 620 sq miles, fixed & mobile nodes
- Public Safety (police, fire)
 - Part of a \$90M overhaul of mission critical data communications system
 - Police spend more time in the field
 - ~1,500 officers spend 100,000 more hours/year in the field
- Building Inspectors
 - Eliminated need for duplicate data entry
 - 9,300 hours of staff time saved annually
 - Improved application turnaround time
 - Inspection information available an average of 22 hours faster
- 180 City applications on the network
- Now adding traffic controllers



Corpus Christi, TX

- 147 sq miles
- Water and Gas AMR
 - Meter reader savings and revenue enhancement - \$4.8M over 5-years
 - 20-year cost savings of \$3.6M
 - Improved billing accuracy and worker safety
 - Reduced service calls by 30%
- Economic Development
 - Downtown and 10 zones
- Public Safety, Public Works, Schools



Vancouver, BC

- Fixed and mobile nodes along Main Street Line (25 buses)
- Public Transit Signal Prioritization
 - Enables buses to maintain schedule and decreases bus route time
 - Increased ridership due to on-time schedule
 - Free Internet access to encourage riders
 - Reduced fuel usage and emissions
 - GPS tracking of buses

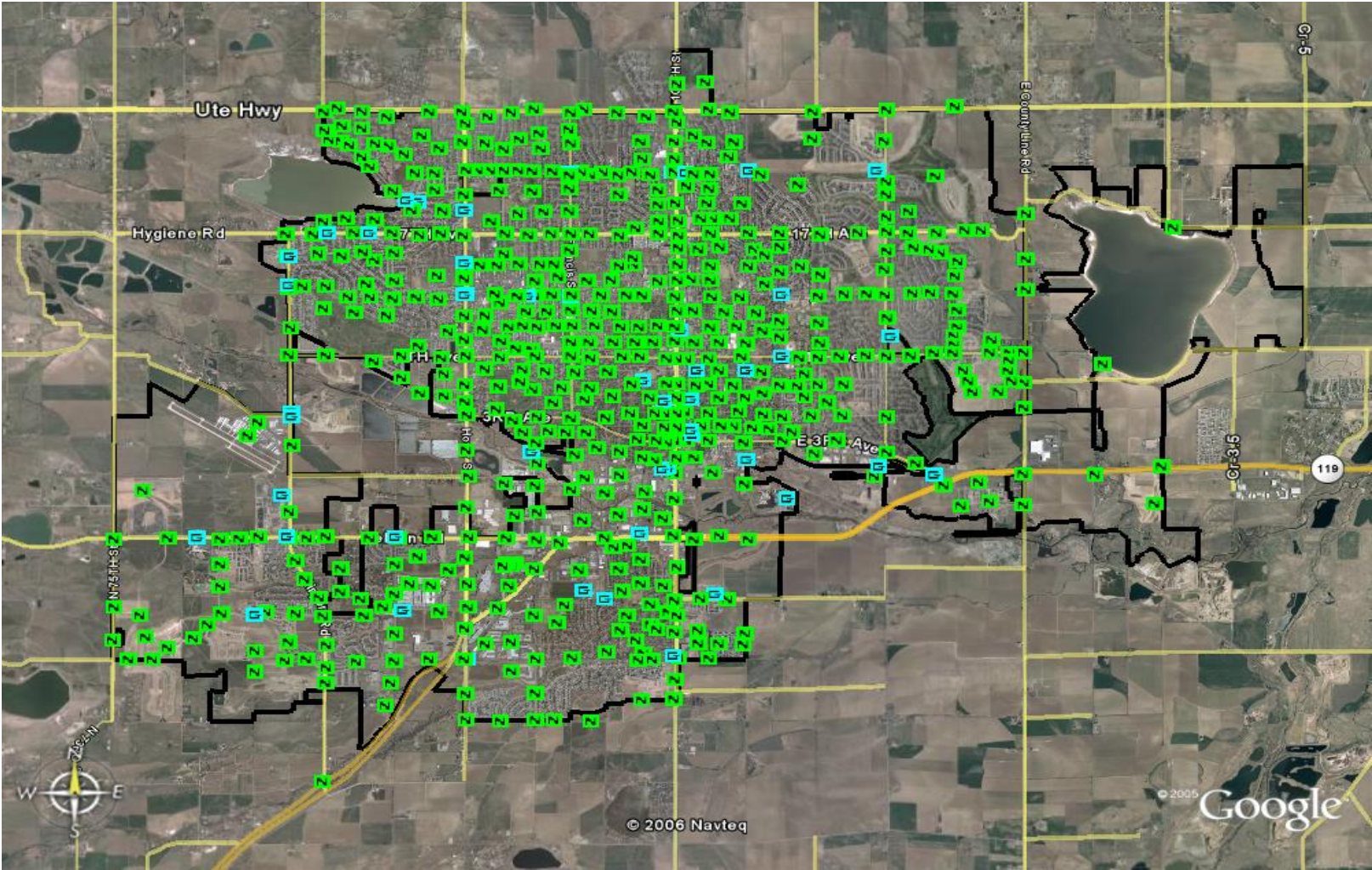


Tucson, AZ

- 227 sq miles, fixed & mobile nodes
- Mobile Telemedicine
 - Access to video and telemetry data in transit enables doctors to start early treatment of trauma patients
 - Hospital better prepared when patient arrives
- Traffic Controllers
 - T1 replacement eliminated \$200K/year in telecom costs
- Police
 - High-speed access to information in the field
- Future
 - Video at intersections (911, traffic, fire stations)



Longmont Network



Past and Present Uses in Longmont

- Present Uses
 - Access for remote workers Building Inspectors, Animal Control, and PW/NR Field Crews
 - IP surveillance cameras in remote sites not serviced by our fiber network.
 - Digital Divide - Internet connection for citizens who have children in the school system and live in subsidized housing
 - Special event internet access –
 - GPS/AVL alternative for cellular transmission
 - Disaster Recovery access alternative

Proposed Usage in Longmont

- Future Plans for our Wi-fi Network
 - Public Safety command vehicle access
 - New Computer Aided Dispatch GPS for Police and Fire vehicle access
 - Automated Meter Reading for Water and Electric systems
 - Centralized Traffic Lights control
 - Replacing the antiquated Inet system
 - Telemedicine
 - Expanded Digital Divide Access

WIRELESS BROADBAND YOU CONTROL

TROPOS[®]
networks

Questions

